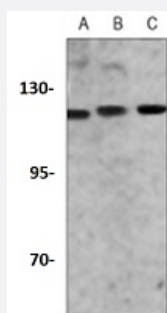


RecomAb™

# NAT10 recombinant monoclonal antibody

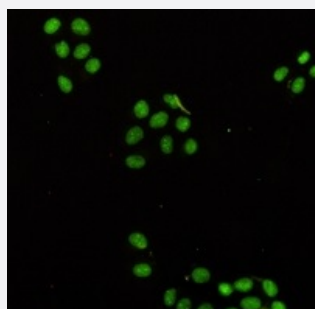
Catalog # RAB02409      Size 100 uL

## Applications



### Western Blot (Cell lysate)

Western blot analysis of Jurkat (A), C6 (B), HeLa (C) whole cell lysates with NAT10 recombinant monoclonal antibody (Cat # RAB02409).



### Immunofluorescence

Immunofluorescent analysis of HeLa cells with NAT10 recombinant monoclonal antibody (Cat # RAB02409). Formalin-fixed cells were permeabilized with 0.1% Triton X-100 in TBS for 5-10 minutes and blocked with 3% BSA-PBS for 30 minutes at room temperature. Cells were probed with the primary antibody in 3% BSA-PBS and incubated overnight at 4 °C in a humidified chamber. Cells were washed with PBST and incubated with a AF488-conjugated secondary antibody (green) in PBS at room temperature in the dark.

## Specification

Product Description	Rabbit recombinant monoclonal antibody raised against recombinant NAT10.
Antibody Species	Rabbit
Immunogen	Original antibody is raised against recombinant protein of human NAT10.
Theoretical MW (kDa)	120
Reactivity	Human, Rat
Specificity	Recognizes endogenous levels of NAT10 protein.

<b>Form</b>	Liquid
<b>Purification</b>	Immunogen affinity chromatography
<b>Isotype</b>	IgG
<b>Recommend Usage</b>	Immunocytochemistry (1:50-1:100) Immunofluorescence (1:50-1:100) Immunoprecipitation (1:10-1:50) Western Blot (1:500-1:1000)
<b>Storage Buffer</b>	In 50mM Tris-Glycine, pH 7.4 (0.15M NaCl, 50% Glycerol, 0.01% Sodium azide and 0.05% BSA)
<b>Storage Instruction</b>	Store at 4°C short term. Aliquot and store at -20°C long term. Avoid freeze-thaw cycles.
<b>Note</b>	This product contains sodium azide: a POISONOUS AND HAZARDOUS SUBSTANCE which should be handled by trained staff only.

## Applications

- Western Blot (Cell lysate)

Western blot analysis of Jurkat (A), C6 (B), HeLa (C) whole cell lysates with NAT10 recombinant monoclonal antibody (Cat # RAB02409).

- Immunocytochemistry

- Immunofluorescence

Immunofluorescent analysis of HeLa cells with NAT10 recombinant monoclonal antibody (Cat # RAB02409). Formalin-fixed cells were permeabilized with 0.1% Triton X-100 in TBS for 5-10 minutes and blocked with 3% BSA-PBS for 30 minutes at room temperature. Cells were probed with the primary antibody in 3% BSA-PBS and incubated overnight at 4 °C in a humidified chamber. Cells were washed with PBST and incubated with a AF488-conjugated secondary antibody (green) in PBS at room temperature in the dark.

- Immunoprecipitation

## Gene Info — NAT10

**Entrez GeneID** [55226](#)

**Protein Accession#** [Q9H0A0](#)

Gene Name	NAT10
Gene Alias	ALP, DKFZp434C116, FLJ10774, FLJ12179, FLJ23850, KIAA1709, hALP
Gene Description	N-acetyltransferase 10 (GCN5-related)
Omim ID	<a href="#">609221</a>
Gene Ontology	<a href="#">Hyperlink</a>
Other Designations	N-acetyltransferase-like protein