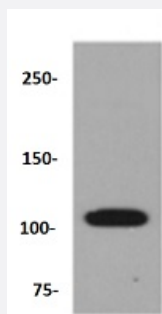


RecomAb™

ABCG1 recombinant monoclonal antibody

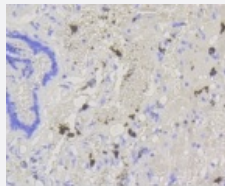
Catalog # RAB02399 Size 100 uL

Applications



Western Blot (Tissue lysate)

Western Blot analysis of Lane 1: THP-1 whole cell lysate with ABCG1 recombinant monoclonal antibody (Cat # RAB02399) at 1:1000 dilution.



Immunohistochemistry (Formalin/PFA-fixed paraffin-embedded sections)

Immunohistochemical analysis of paraffin-embedded human lung tissue using ABCG1 recombinant monoclonal antibody (Cat # RAB02399). Counter stained with hematoxylin.

Specification

Product Description	Rabbit recombinant monoclonal antibody raised against recombinant ABCG1.
Antibody Species	Rabbit
Theoretical MW (kDa)	110
Reactivity	Human, Rat
Specificity	This antibody detects endogenous levels of ABCG1 and does not cross-react with related proteins.
Form	Liquid

Purification	Protein A purification
Isotype	IgG
Recommend Usage	Immunocytochemistry (1:50-1:100) Immunofluorescence (1:50-1:100) Immunohistochemistry (1:50-1:200) Western Blot (1:500-1:2000)
Storage Buffer	In PBS, pH 7.2 (0.02% sodium azide and 50% glycerol)
Storage Instruction	Store at 4°C short term. Aliquot and store at -20°C long term. Avoid freeze-thaw cycles.
Note	This product contains sodium azide: a POISONOUS AND HAZARDOUS SUBSTANCE which should be handled by trained staff only.

Applications

- Western Blot (Tissue lysate)

Western Blot analysis of Lane 1:THP-1 whole cell lysate with ABCG1 recombinant monoclonal antibody (Cat # RAB02399) at 1:1000 dilution.

- Immunohistochemistry (Formalin/PFA-fixed paraffin-embedded sections)

Immunohistochemical analysis of paraffin-embedded human lung tissue using ABCG1 recombinant monoclonal antibody (Cat # RAB02399). Counter stained with hematoxylin.

- Immunocytochemistry

- Immunofluorescence

Gene Info — ABCG1

Entrez GeneID	9619
Protein Accession#	P45844
Gene Name	ABCG1
Gene Alias	ABC8, MGC34313, WHITE1
Gene Description	ATP-binding cassette, sub-family G (WHITE), member 1

Omim ID [603076](#)

Gene Ontology [Hyperlink](#)

Gene Summary

The protein encoded by this gene is a member of the superfamily of ATP-binding cassette (ABC) transporters. ABC proteins transport various molecules across extra- and intra-cellular membranes. ABC genes are divided into seven distinct subfamilies (ABC1, MDR/TAP, MRP, ALD, OABP, GCN20, White). This protein is a member of the White subfamily. It is involved in macrophage cholesterol and phospholipids transport, and may regulate cellular lipid homeostasis in other cell types. Six alternative splice variants have been identified. [provided by RefSeq]

Other Designations

ABC transporter 8|ATP-binding cassette sub-family G member 1|ATP-binding cassette transporter 8|ATP-binding cassette transporter member 1 of subfamily G|OTTHUMP00000109322|homolog of Drosophila white|white protein homolog (ATP-binding cassette transporter

Pathway

- [ABC transporters](#)

Disease

- [Alzheimer disease](#)
- [Atherosclerosis](#)
- [Calcinosis](#)
- [Cardiovascular Diseases](#)
- [Coronary Artery Disease](#)
- [Diabetes Mellitus](#)
- [Edema](#)
- [Hyperlipidemias](#)
- [Kidney Failure](#)
- [Personality Inventory](#)