

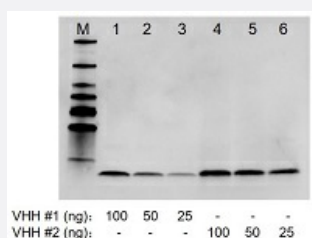
NanoAb™

RecomAb™

# Camelid VHH recombinant monoclonal antibody, clone 96A3F5

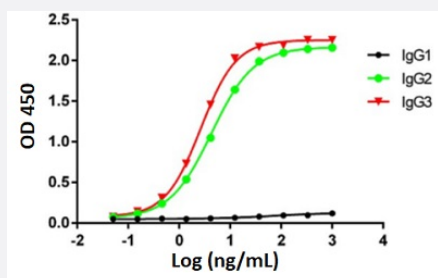
Catalog # RAB02367      Size 200 uL

## Applications



### Western Blot

Western blot analysis of VHHs with Camelid VHH recombinant monoclonal antibody, clone 96A3F5 (Cat # RAB02367).

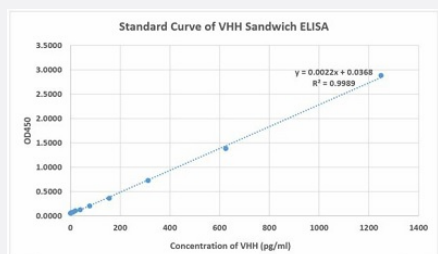


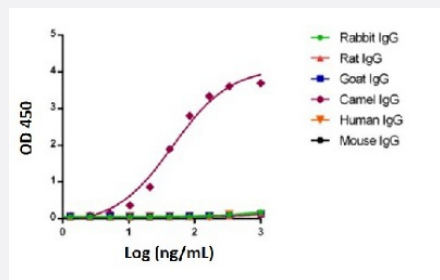
### Enzyme-linked Immunoabsorbent Assay

ELISA binding of Camelid VHH recombinant monoclonal antibody, clone 96A3F5 (Cat # RAB02367) with different subclasses camelid IgG. The antibody is specific to camelid heavy chain antibodies (IgG2&3), but not to the camelid conventional antibody (IgG1).

### Standard Curve

Sandwich ELISA is developed by using Camelid VHH recombinant monoclonal antibody, clone 96A3F5 (Cat # RAB02367) and Camelid VHH recombinant monoclonal antibody cocktail (HRP)(Cat # RAB02384) as the capture and detection antibodies, respectively.





## Cross-reactivity test

Camelid VHH recombinant monoclonal antibody, clone 96A3F5 (Cat # RAB02367) is specific to Camelid IgG and has no cross-reactivity with mouse, rat, rabbit, goat and human immunoglobulins.

**This product contains sodium azide: a POISONOUS AND HAZARDOUS SUBSTANCE which should be handled by trained staff only.**

This product contains sodium azide: a POISONOUS AND HAZARDOUS SUBSTANCE which should be handled by trained staff only.

Camelid VHH recombinant monoclonal antibody, clone 96A3F5 (Cat # RAB02367) is specific to Camelid IgG and has no cross-reactivity with mouse, rat, rabbit, goat and human immunoglobulins.

## Specification

<b>Product Description</b>	Rabbit recombinant monoclonal antibody raised against camelid sdAb (alpaca, llama and camel).
<b>Antibody Species</b>	Rabbit
<b>Immunogen</b>	Original antibody is raised against llama sdAb
<b>Reactivity</b>	Camelid
<b>Specificity</b>	Rabbit Anti-Camelid VHH Antibody is specific for camelid sdAb (alpaca, llama and camel). The monoclonal antibody has no cross-reactivity with mouse, rat, rabbit, chicken, goat or human immunoglobulins.
<b>Form</b>	Liquid
<b>Purification</b>	Protein A affinity purification
<b>Isotype</b>	IgG

**Quality Control Testing**

Standard Curve and Cross-reactivity test

Standard Curve

Sandwich ELISA is developed by using Camelid VHH recombinant monoclonal antibody, clone 96A3F5 (Cat # RAB02367) and Camelid VHH recombinant monoclonal antibody cocktail (HRP)(Cat # RAB02384) as the capture and detection antibodies, respectively.

Cross-reactivity test

Camelid VHH recombinant monoclonal antibody, clone 96A3F5 (Cat # RAB02367) is specific to Camelid IgG and has no cross-reactivity with mouse, rat, rabbit, goat and human immunoglobulins.

**Recommend Usage**

ELISA (1:5,000-1:10,000)

Sandwich ELISA

Western blot (1:1,000-1:5,000)

The optimal working dilution should be determined by the end user.

**Storage Buffer**

In PBS, pH 7.4 (0.02% sodium azide and 50% glycerol)

**Storage Instruction**

Store at -20°C.

This product is stable for 1 year upon receipt, when handled and stored as instructed.

**Note**

This product contains sodium azide: a POISONOUS AND HAZARDOUS SUBSTANCE which should be handled by trained staff only.

This product contains sodium azide: a POISONOUS AND HAZARDOUS SUBSTANCE which should be handled by trained staff only.

Camelid VHH recombinant monoclonal antibody, clone 96A3F5 (Cat # RAB02367) is specific to Camelid IgG and has no cross-reactivity with mouse, rat, rabbit, goat and human immunoglobulins.

## Applications

- Western Blot

Western blot analysis of VHHs with Camelid VHH recombinant monoclonal antibody, clone 96A3F5 (Cat # RAB02367).

- Enzyme-linked Immunoabsorbent Assay

ELISA binding of Camelid VHH recombinant monoclonal antibody, clone 96A3F5 (Cat # RAB02367) with different subclasses camelid IgG. The antibody is specific to camelid heavy chain antibodies (IgG2&3), but not to the camelid conventional antibody (IgG1).