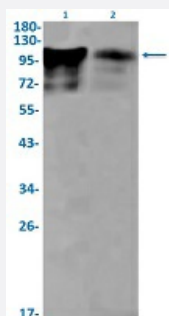


RecomAb™

# BCL11B recombinant monoclonal antibody, clone R08-5K7

Catalog # RAB02358      Size 100 uL

## Applications



### Western Blot

Western Blot analysis of Lane 1: K562 and Lane 2: Hela lysates with BCL11B recombinant monoclonal antibody, clone R08-5K7 (Cat # RAB02358).

## Specification

<b>Product Description</b>	Rabbit recombinant monoclonal antibody raised against human BCL11B.
<b>Antibody Species</b>	Rabbit
<b>Immunogen</b>	Original antibody is raised against a synthetic peptide corresponding to human BCL11B.
<b>Theoretical MW (kDa)</b>	Calculated MW: 96 kD
<b>Reactivity</b>	Human
<b>Form</b>	Liquid
<b>Purification</b>	Affinity purification
<b>Isotype</b>	IgG
<b>Recommend Usage</b>	Western Blot (1:500-1:1000) The optimal working dilution should be determined by the end user.
<b>Storage Buffer</b>	In 50 mM Tris-Glycine, pH 7.4 (0.15 M NaCl, 40% Glycerol, 0.01% Sodium azide and 0.05% BSA)

**Storage Instruction**

Store at -20 °C.  
Aliquot to avoid repeated freezing and thawing.

**Note**

This product contains sodium azide: a POISONOUS AND HAZARDOUS SUBSTANCE which should be handled by trained staff only.

## Applications

- Western Blot

Western Blot analysis of Lane 1: K562 and Lane 2: Hela lysates with BCL11B recombinant monoclonal antibody, clone R08-5K7 (Cat # RAB02358).

## Gene Info — BCL11B

**Entrez GeneID** [64919](#)

**Protein Accession#** [Q9C0K0](#)

**Gene Name** BCL11B

**Gene Alias** CTIP-2, CTIP2, RIT1, hRIT1-alpha

**Gene Description** B-cell CLL/lymphoma 11B (zinc finger protein)

**Omim ID** [606558](#)

**Gene Ontology** [Hyperlink](#)

**Gene Summary** This gene encodes a C2H2-type zinc finger protein and is closely related to BCL11A, a gene whose translocation may be associated with B-cell malignancies. The specific function of this gene has not yet been determined. Two alternatively spliced transcript variants, which encode distinct isoforms, have been reported. [provided by RefSeq]

**Other Designations** B-cell CLL/lymphoma 11B|B-cell CLL/lymphoma 11B/T-cell receptor delta constant region fusion protein|B-cell lymphoma/leukaemia 11B|BCL11B/TRDC fusion|OTTHUMP00000067187|zinc finger protein hRit1 alpha