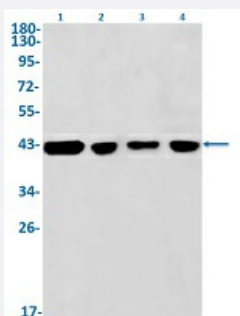


RecomAb™

# CXCR5 recombinant monoclonal antibody, clone R03-8K7

Catalog # RAB02354      Size 100 uL

## Applications



### Western Blot

Western Blot analysis of Lane 1: K562, Lane 2: C6, Lane 3: 3T3 and Lane 4: HeLa lysates with CXCR5 recombinant monoclonal antibody, clone R03-8K7 (Cat # RAB02354).

## Specification

<b>Product Description</b>	Rabbit recombinant monoclonal antibody raised against human CXCR5.
<b>Antibody Species</b>	Rabbit
<b>Immunogen</b>	Original antibody is raised against a synthetic peptide corresponding to human CXCR5.
<b>Theoretical MW (kDa)</b>	Calculated MW: 42 kD
<b>Reactivity</b>	Human, Mouse, Rat
<b>Form</b>	Liquid
<b>Purification</b>	Affinity purification
<b>Isotype</b>	IgG
<b>Recommend Usage</b>	Western Blot (1:500-1:1000) The optimal working dilution should be determined by the end user.
<b>Storage Buffer</b>	In 50 mM Tris-Glycine, pH 7.4 (0.15 M NaCl, 40% Glycerol, 0.01% Sodium azide and 0.05% BSA)

**Storage Instruction**

Store at -20 °C.  
Aliquot to avoid repeated freezing and thawing.

**Note**

This product contains sodium azide: a POISONOUS AND HAZARDOUS SUBSTANCE which should be handled by trained staff only.

## Applications

- Western Blot

Western Blot analysis of Lane 1: K562, Lane 2: C6, Lane 3: 3T3 and Lane 4: Hela lysates with CXCR5 recombinant monoclonal antibody, clone R03-8K7 (Cat # RAB02354).

## Gene Info — CXCR5

**Entrez GeneID**[643](#)**Protein Accession#**[P32302](#)**Gene Name**

CXCR5

**Gene Alias**

BLR1, CD185, MDR15, MGC117347

**Gene Description**

chemokine (C-X-C motif) receptor 5

**Omim ID**[601613](#)**Gene Ontology**[Hyperlink](#)**Gene Summary**

This gene was identified as a gene specifically expressed in Burkitt's lymphoma and lymphatic tissues. The protein encoded by this gene is predicted to be a seven transmembrane G protein-coupled receptor and belongs to the CXC chemokine receptor family. BLC, a B-lymphocyte chemoattractant, was identified to be a specific ligand for this receptor. Studies of this gene and its mouse counterpart strongly suggest the essential function of this gene in B cell migration and localization within specific anatomic compartments, such as follicles in lymph nodes as well as in spleen. Two alternatively spliced variants of this gene exist. [provided by RefSeq]

**Other Designations**

Burkitt lymphoma receptor 1|Burkitt lymphoma receptor 1, GTP binding protein (chemokine (C-X-C motif) receptor 5)|Burkitt lymphoma receptor 1, GTP-binding protein|C-X-C chemokine receptor type 5|monocyte-derived receptor 15

## Pathway

- [Chemokine signaling pathway](#)

- [Cytokine-cytokine receptor interaction](#)

## Disease

- [Cardiovascular Diseases](#)
- [Diabetes Mellitus](#)
- [Edema](#)
- [Genetic Predisposition to Disease](#)