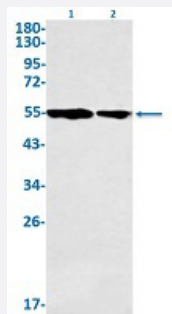


RecomAb™

CCNA2 recombinant monoclonal antibody, clone R02-3H6

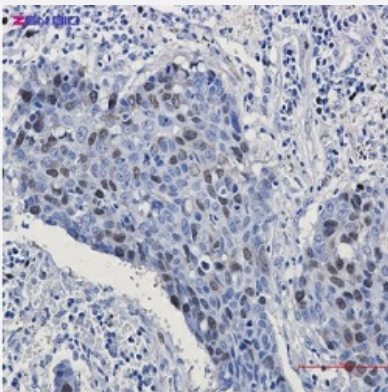
Catalog # RAB02352 Size 100 uL

Applications



Western Blot

Western Blot analysis of Lane 1: Jurkat and Lane 2: Hela lysates with CCNA2 recombinant monoclonal antibody, clone R02-3H6 (Cat # RAB02352).



Immunohistochemistry (Formalin/PFA-fixed paraffin-embedded sections)

Immunohistochemical staining (Formalin-fixed paraffin-embedded sections) of human lung cancer with CCNA2 recombinant monoclonal antibody, clone R02-3H6 (Cat # RAB02352). High-pressure and temperature Sodium Citrate pH 6.0 was used for antigen retrieval.

Specification

Product Description	Rabbit recombinant monoclonal antibody raised against human CCNA2.
Antibody Species	Rabbit
Immunogen	Original antibody is raised against recombinant protein corresponding to human CCNA2.
Theoretical MW (kDa)	Calculated MW: 49 kD
Reactivity	Human

Form	Liquid
Purification	Affinity purification
Isotype	IgG
Recommend Usage	Immunofluorescence(1:50-1:200) Immunohistochemistry (1:50-1:100) Immunoprecipitation(1:20) Western Blot (1:500-1:1000) The optimal working dilution should be determined by the end user.
Storage Buffer	In 50 mM Tris-Glycine, pH 7.4 (0.15 M NaCl, 40% Glycerol, 0.01% Sodium azide and 0.05% BSA)
Storage Instruction	Store at -20 °C. Aliquot to avoid repeated freezing and thawing.
Note	This product contains sodium azide: a POISONOUS AND HAZARDOUS SUBSTANCE which should be handled by trained staff only.

Applications

- Western Blot

Western Blot analysis of Lane 1: Jurkat and Lane 2: Hela lysates with CCNA2 recombinant monoclonal antibody, clone R02-3H6 (Cat # RAB02352).

- Immunohistochemistry (Formalin/PFA-fixed paraffin-embedded sections)

Immunohistochemical staining (Formalin-fixed paraffin-embedded sections) of human lung cancer with CCNA2 recombinant monoclonal antibody, clone R02-3H6 (Cat # RAB02352). High-pressure and temperature Sodium Citrate pH 6.0 was used for antigen retrieval.

- Immunohistochemistry (Frozen sections)

- Immunofluorescence

- Immunoprecipitation

Gene Info — CCNA2

Entrez GeneID	890
Protein Accession#	P20248
Gene Name	CCNA2

Gene Alias	CCN1, CCNA
Gene Description	cyclin A2
Omim ID	123835
Gene Ontology	Hyperlink
Gene Summary	<p>The protein encoded by this gene belongs to the highly conserved cyclin family, whose members are characterized by a dramatic periodicity in protein abundance through the cell cycle. Cyclins function as regulators of CDK kinases. Different cyclins exhibit distinct expression and degradation patterns which contribute to the temporal coordination of each mitotic event. In contrast to cyclin A1, which is present only in germ cells, this cyclin is expressed in all tissues tested. This cyclin binds and activates CDC2 or CDK2 kinases, and thus promotes both cell cycle G1/S and G2/M transitions. [provided by RefSeq]</p>
Other Designations	cyclin A

Pathway

- [Cell cycle](#)

Disease

- [Adenocarcinoma](#)
- [Esophageal Neoplasms](#)
- [Genetic Predisposition to Disease](#)
- [Kidney Failure](#)
- [Lung Neoplasms](#)
- [Ovarian Neoplasms](#)
- [Pulmonary Disease](#)
- [Urinary Bladder Neoplasms](#)
- [Werner syndrome](#)