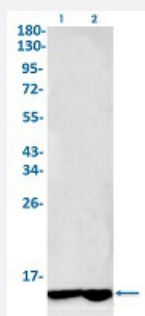


RecomAb™

# COX6C recombinant monoclonal antibody, clone R06-1D9

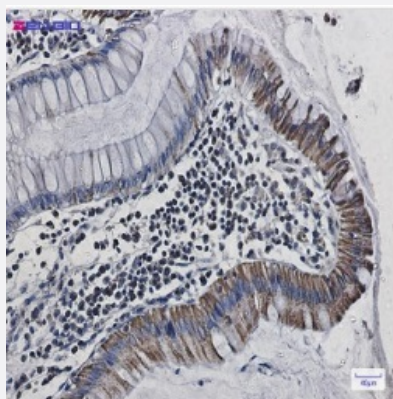
Catalog # RAB02343      Size 100 uL

## Applications



### Western Blot

Western Blot analysis of Lane 1: 3T3 and Lane 2: Hela lysates with COX6C recombinant monoclonal antibody, clone R06-1D9 (Cat # RAB02343).



### Immunohistochemistry (Formalin/PFA-fixed paraffin-embedded sections)

Immunohistochemical staining (Formalin-fixed paraffin-embedded sections) of human colon cancer with COX6C recombinant monoclonal antibody, clone R06-1D9 (Cat # RAB02343). High-pressure and temperature Sodium Citrate pH 6.0 was used for antigen retrieval.

## Specification

Product Description	Rabbit recombinant monoclonal antibody raised against human COX6C.
Antibody Species	Rabbit
Immunogen	Original antibody is raised against a synthetic peptide corresponding to human COX6C.
Theoretical MW (kDa)	Calculated MW: 9 kDa
Reactivity	Human, Mouse, Rat

Form	Liquid
Purification	Affinity purification
Isotype	IgG
Recommend Usage	Immunohistochemistry (1:50-1:100) Western Blot (1:500-1:1000) The optimal working dilution should be determined by the end user.
Storage Buffer	In 50 mM Tris-Glycine, pH 7.4 (0.15 M NaCl, 40% Glycerol, 0.01% Sodium azide and 0.05% BSA)
Storage Instruction	Store at -20 °C. Aliquot to avoid repeated freezing and thawing.
Note	This product contains sodium azide: a POISONOUS AND HAZARDOUS SUBSTANCE which should be handled by trained staff only.

## Applications

- Western Blot

Western Blot analysis of Lane 1: 3T3 and Lane 2: Hela lysates with COX6C recombinant monoclonal antibody, clone R06-1D9 (Cat # RAB02343).

- Immunohistochemistry (Formalin/PFA-fixed paraffin-embedded sections)

Immunohistochemical staining (Formalin-fixed paraffin-embedded sections) of human colon cancer with COX6C recombinant monoclonal antibody, clone R06-1D9 (Cat # RAB02343). High-pressure and temperature Sodium Citrate pH 6.0 was used for antigen retrieval.

## Gene Info — COX6C

Entrez GeneID	<a href="#">1345</a>
Protein Accession#	<a href="#">P09669</a>
Gene Name	COX6C
Gene Alias	-
Gene Description	cytochrome c oxidase subunit VIc
Omim ID	<a href="#">124090</a>
Gene Ontology	<a href="#">Hyperlink</a>

**Gene Summary**

Cytochrome c oxidase (COX), the terminal enzyme of the mitochondrial respiratory chain, catalyzes the electron transfer from reduced cytochrome c to oxygen. It is a heteromeric complex consisting of 3 catalytic subunits encoded by mitochondrial genes and multiple structural subunits encoded by nuclear genes. The mitochondrially-encoded subunits function in electron transfer, and the nuclear-encoded subunits may be involved in the regulation and assembly of the complex. This nuclear gene encodes subunit VIc, which has 77% amino acid sequence identity with mouse COX subunit VIc. This gene is up-regulated in prostate cancer cells. A pseudogene COX6CP1 has been found on chromosomes 16p12. [provided by RefSeq]

**Other Designations**

cytochrome c oxidase subunit VIc preprotein

**Pathway**

- [Cardiac muscle contraction](#)
- [Metabolic pathways](#)
- [Oxidative phosphorylation](#)

**Disease**

- [Genetic Predisposition to Disease](#)
- [Prostatic Neoplasms](#)