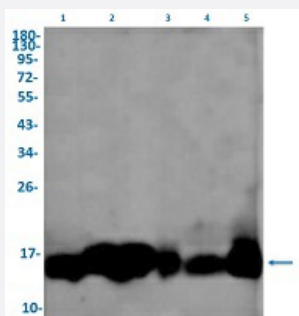


RecomAb™

CYCS recombinant monoclonal antibody, clone R02-9A7

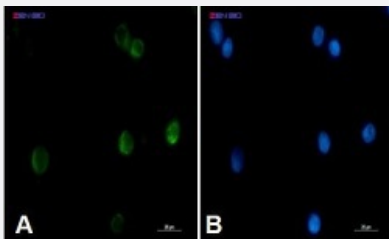
Catalog # RAB02342 Size 100 uL

Applications



Western Blot

Western Blot analysis of Lane 1: K562, Lane 2: rat brain, Lane 3: C6, Lane 4: 3T3 and Lane 5: Hela lysates with CYCS recombinant monoclonal antibody, clone R02-9A7 (Cat # RAB02342).



Immunocytochemistry

Immunocytochemical staining of K562 with CYCS recombinant monoclonal antibody, clone R02-9A7 (Cat # RAB02342). (A) CYCS (green) and (B) DAPI (blue).

Specification

Product Description	Rabbit recombinant monoclonal antibody raised against human CYCS.
Antibody Species	Rabbit
Immunogen	Original antibody is raised against a synthetic peptide corresponding to human CYCS.
Theoretical MW (kDa)	Calculated MW: 12 kD
Reactivity	Human, Mouse, Rat
Form	Liquid

Purification	Affinity purification
Isotype	IgG
Recommend Usage	Immunocytochemistry Immunofluorescence (1:50-1:200) Immunoprecipitation (1:20) Western Blot (1:500-1:1000) The optimal working dilution should be determined by the end user.
Storage Buffer	In 50 mM Tris-Glycine, pH 7.4 (0.15 M NaCl, 40% Glycerol, 0.01% Sodium azide and 0.05% BSA)
Storage Instruction	Store at -20 °C. Aliquot to avoid repeated freezing and thawing.
Note	This product contains sodium azide: a POISONOUS AND HAZARDOUS SUBSTANCE which should be handled by trained staff only.

Applications

- Western Blot

Western Blot analysis of Lane 1: K562, Lane 2: rat brain, Lane 3: C6, Lane 4: 3T3 and Lane 5: Hela lysates with CYCS recombinant monoclonal antibody, clone R02-9A7 (Cat # RAB02342).

- Immunocytochemistry

Immunocytochemical staining of K562 with CYCS recombinant monoclonal antibody, clone R02-9A7 (Cat # RAB02342). (A) CYCS (green) and (B) DAPI (blue).

- Immunofluorescence

- Immunoprecipitation

Gene Info — CYCS

Entrez GeneID	54205
Protein Accession#	P99999
Gene Name	CYCS
Gene Alias	CYC, HCS
Gene Description	cytochrome c, somatic

Omim ID [123970](#)

Gene Ontology [Hyperlink](#)

Gene Summary This gene encodes cytochrome c, a component of the electron transport chain in mitochondria. The heme group of cytochrome c accepts electrons from the b-c1 complex and transfers electrons to the cytochrome oxidase complex. Cytochrome c is also involved in initiation of apoptosis. Upon release of cytochrome c to the cytoplasm, the protein binds apoptotic protease activating factor which activates the apoptotic initiator procaspase 9. Many cytochrome c pseudogenes exist, scattered throughout the human genome. [provided by RefSeq]

Other Designations cytochrome c

Pathway

- [Amyotrophic lateral sclerosis \(ALS\)](#)
- [Apoptosis](#)
- [Colorectal cancer](#)
- [p53 signaling pathway](#)
- [Pathways in cancer](#)
- [Small cell lung cancer](#)

Disease

- [Thrombocytopenia](#)