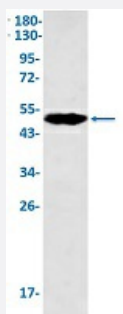


RecomAb™

# KRT18 recombinant monoclonal antibody, clone R01-7H3

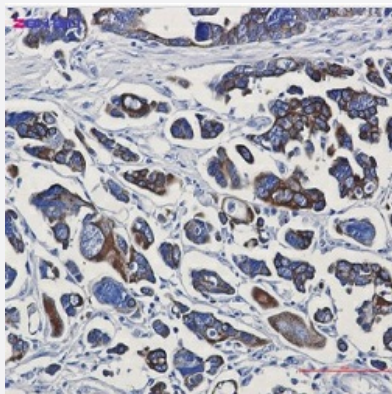
Catalog # RAB02340      Size 100 uL

## Applications



### Western Blot

Western Blot analysis of Hela lysates with KRT18 recombinant monoclonal antibody, clone R01-7H3 (Cat # RAB02340).



### Immunohistochemistry (Formalin/PFA-fixed paraffin-embedded sections)

Immunohistochemical staining (Formalin-fixed paraffin-embedded sections) of human cholangiocarcinoma with KRT18 recombinant monoclonal antibody, clone R01-7H3 (Cat # RAB02340). High-pressure and temperature Sodium Citrate pH 6.0 was used for antigen retrieval.

## Specification

<b>Product Description</b>	Rabbit recombinant monoclonal antibody raised against human KRT18.
<b>Antibody Species</b>	Rabbit
<b>Immunogen</b>	Original antibody is raised against recombinant protein corresponding to human KRT18.
<b>Theoretical MW (kDa)</b>	Calculated MW: 48 kD
<b>Reactivity</b>	Human

Form	Liquid
Purification	Affinity purification
Isotype	IgG
Recommend Usage	Immunofluorescence (1:50-1:200) Immunohistochemistry (1:50-1:100) Western Blot (1:500-1:1000) The optimal working dilution should be determined by the end user.
Storage Buffer	In 50 mM Tris-Glycine, pH 7.4 (0.15 M NaCl, 40% Glycerol, 0.01% Sodium azide and 0.05% BSA)
Storage Instruction	Store at -20 °C. Aliquot to avoid repeated freezing and thawing.
Note	This product contains sodium azide: a POISONOUS AND HAZARDOUS SUBSTANCE which should be handled by trained staff only.

## Applications

- Western Blot

Western Blot analysis of Hela lysates with KRT18 recombinant monoclonal antibody, clone R01-7H3 (Cat # RAB02340).

- Immunohistochemistry (Formalin/PFA-fixed paraffin-embedded sections)

Immunohistochemical staining (Formalin-fixed paraffin-embedded sections) of human cholangiocarcinoma with KRT18 recombinant monoclonal antibody, clone R01-7H3 (Cat # RAB02340). High-pressure and temperature Sodium Citrate pH 6.0 was used for antigen retrieval.

- Immunohistochemistry (Frozen sections)

- Immunofluorescence

## Gene Info — KRT18

Entrez GeneID	<a href="#">3875</a>
Protein Accession#	<a href="#">P05783</a>
Gene Name	KRT18
Gene Alias	CYK18, K18
Gene Description	keratin 18

**Omim ID** [148070 215600](#)

**Gene Ontology** [Hyperlink](#)

**Gene Summary** KRT18 encodes the type I intermediate filament chain keratin 18. Keratin 18, together with its filament partner keratin 8, are perhaps the most commonly found members of the intermediate filament gene family. They are expressed in single layer epithelial tissues of the body. Mutations in this gene have been linked to cryptogenic cirrhosis. Two transcript variants encoding the same protein have been found for this gene. [provided by RefSeq]

**Other Designations** cell proliferation-inducing protein 46|cytokeratin 18

## Pathway

- [Pathogenic Escherichia coli infection - EHEC](#)

## Disease

- [Cleft Lip](#)
- [Cleft Palate](#)
- [Drug-Induced Liver Injury](#)
- [Genetic Predisposition to Disease](#)
- [Liver Cirrhosis](#)
- [Liver Failure](#)