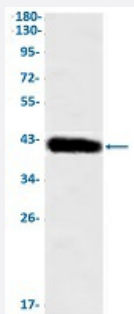


RecomAb™

# KRT19 recombinant monoclonal antibody, clone R07-2G5

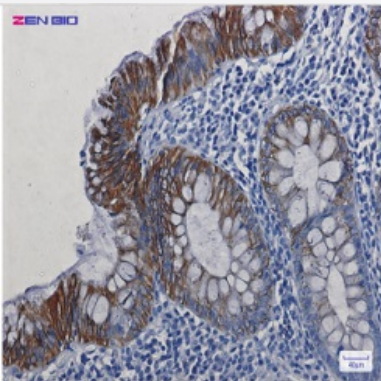
Catalog # RAB02338      Size 100 uL

## Applications



### Western Blot

Western Blot analysis of rat brain lysates with KRT19 recombinant monoclonal antibody, clone R07-2G5 (Cat # RAB02338).



### Immunohistochemistry (Formalin/PFA-fixed paraffin-embedded sections)

Immunohistochemical staining (Formalin-fixed paraffin-embedded sections) of human colon cancer with KRT19 recombinant monoclonal antibody, clone R07-2G5 (Cat # RAB02338). High-pressure and temperature Sodium Citrate pH 6.0 was used for antigen retrieval.

## Specification

<b>Product Description</b>	Rabbit recombinant monoclonal antibody raised against human KRT19.
<b>Antibody Species</b>	Rabbit
<b>Immunogen</b>	Original antibody is raised against a synthetic peptide corresponding to human KRT19.
<b>Theoretical MW (kDa)</b>	Calculated MW: 44 kD
<b>Reactivity</b>	Human, Rat

Form	Liquid
Purification	Affinity purification
Isotype	IgG
Recommend Usage	Immunofluorescence (1:50-1:200) Immunohistochemistry (1:50-1:100) Immunoprecipitation (1:20) Western Blot (1:500-1:1000) The optimal working dilution should be determined by the end user.
Storage Buffer	In 50 mM Tris-Glycine, pH 7.4 (0.15 M NaCl, 40% Glycerol, 0.01% Sodium azide and 0.05% BSA)
Storage Instruction	Store at -20 °C. Aliquot to avoid repeated freezing and thawing.
Note	This product contains sodium azide: a POISONOUS AND HAZARDOUS SUBSTANCE which should be handled by trained staff only.

## Applications

- Western Blot

Western Blot analysis of rat brain lysates with KRT19 recombinant monoclonal antibody, clone R07-2G5 (Cat # RAB02338).

- Immunohistochemistry (Formalin/PFA-fixed paraffin-embedded sections)

Immunohistochemical staining (Formalin-fixed paraffin-embedded sections) of human colon cancer with KRT19 recombinant monoclonal antibody, clone R07-2G5 (Cat # RAB02338). High-pressure and temperature Sodium Citrate pH 6.0 was used for antigen retrieval.

- Immunohistochemistry (Frozen sections)

- Immunofluorescence

- Immunoprecipitation

## Gene Info — KRT19

Entrez GeneID	<a href="#">3880</a>
Protein Accession#	<a href="#">P08727</a>
Gene Name	KRT19

Gene Alias	CK19, K19, K1CS, MGC15366
Gene Description	keratin 19
Omim ID	<a href="#">148020</a>
Gene Ontology	<a href="#">Hyperlink</a>
Gene Summary	<p>The protein encoded by this gene is a member of the keratin family. The keratins are intermediate filament proteins responsible for the structural integrity of epithelial cells and are subdivided into cytokeratins and hair keratins. The type I cytokeratins consist of acidic proteins which are arranged in pairs of heterotypic keratin chains. Unlike its related family members, this smallest known acidic cytokeratin is not paired with a basic cytokeratin in epithelial cells. It is specifically expressed in the periderm, the transiently superficial layer that envelopes the developing epidermis. The type I cytokeratins are clustered in a region of chromosome 17q12-q21. [provided by RefSeq]</p>
Other Designations	40-kDa keratin intermediate filament cytokeratin 19 keratin, type I cytoskeletal 19 keratin, type I, 40-kd

## Disease

- [Liver Cirrhosis](#)