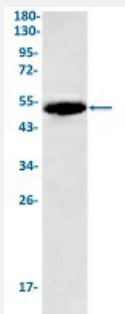


RecomAb™

# KRT7 recombinant monoclonal antibody, clone R03-2E7

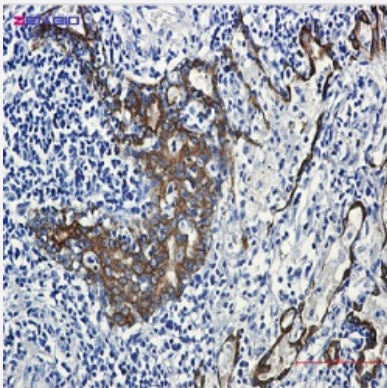
Catalog # RAB02337      Size 100 uL

## Applications



### Western Blot

Western Blot analysis of Hela lysates with KRT7 recombinant monoclonal antibody, clone R03-2E7 (Cat # RAB02337).



### Immunohistochemistry (Formalin/PFA-fixed paraffin-embedded sections)

Immunohistochemical staining (Formalin-fixed paraffin-embedded sections) of human lung cancer with KRT7 recombinant monoclonal antibody, clone R03-2E7 (Cat # RAB02337). High-pressure and temperature Sodium Citrate pH 6.0 was used for antigen retrieval.

## Specification

Product Description	Rabbit recombinant monoclonal antibody raised against human KRT7.
Antibody Species	Rabbit
Immunogen	Original antibody is raised against a synthetic peptide corresponding to human KRT7.
Theoretical MW (kDa)	Calculated MW: 51 kD
Reactivity	Human

Form	Liquid
Purification	Affinity purification
Isotype	IgG
Recommend Usage	Immunofluorescence (1:50-1:200) Immunohistochemistry (1:50-1:100) Immunoprecipitation (1:20) Western Blot (1:500-1:1000) The optimal working dilution should be determined by the end user.
Storage Buffer	In 50 mM Tris-Glycine, pH 7.4 (0.15 M NaCl, 40% Glycerol, 0.01% Sodium azide and 0.05% BSA)
Storage Instruction	Store at -20 °C. Aliquot to avoid repeated freezing and thawing.
Note	This product contains sodium azide: a POISONOUS AND HAZARDOUS SUBSTANCE which should be handled by trained staff only.

## Applications

- Western Blot

Western Blot analysis of Hela lysates with KRT7 recombinant monoclonal antibody, clone R03-2E7 (Cat # RAB02337).

- Immunohistochemistry (Formalin/PFA-fixed paraffin-embedded sections)

Immunohistochemical staining (Formalin-fixed paraffin-embedded sections) of human lung cancer with KRT7 recombinant monoclonal antibody, clone R03-2E7 (Cat # RAB02337). High-pressure and temperature Sodium Citrate pH 6.0 was used for antigen retrieval.

- Immunohistochemistry (Frozen sections)

- Immunofluorescence

- Immunoprecipitation

## Gene Info — KRT7

Entrez GeneID	<a href="#">3855</a>
Protein Accession#	<a href="#">P08729</a>
Gene Name	KRT7

Gene Alias	CK7, K2C7, K7, MGC129731, MGC3625, SCL
Gene Description	keratin 7
Omim ID	<a href="#">148059</a>
Gene Ontology	<a href="#">Hyperlink</a>
Gene Summary	<p>The protein encoded by this gene is a member of the keratin gene family. The type II cytokeratins consist of basic or neutral proteins which are arranged in pairs of heterotypic keratin chains coexpressed during differentiation of simple and stratified epithelial tissues. This type II cytokeratin is specifically expressed in the simple epithelia lining the cavities of the internal organs and in the gland ducts and blood vessels. The genes encoding the type II cytokeratins are clustered in a region of chromosome 12q12-q13. Alternative splicing may result in several transcript variants; however, not all variants have been fully described. [provided by RefSeq]</p>
Other Designations	cytokeratin 7 keratin, 55K type II cytoskeletal keratin, simple epithelial type I, K7 keratin, type II cytoskeletal 7 sarcolectin type II mesothelial keratin K7