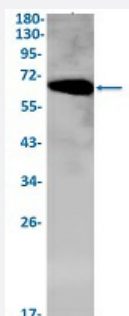


RecomAb™

ELK1 recombinant monoclonal antibody, clone R06-5J2

Catalog # RAB02304 Size 100 uL

Applications



Western Blot

Western Blot analysis of HeLa lysates with ELK1 recombinant monoclonal antibody, clone R06-5J2 (Cat # RAB02304).

Specification

Product Description	Rabbit recombinant monoclonal antibody raised against human ELK1.
Antibody Species	Rabbit
Immunogen	Original antibody is raised against a synthetic peptide corresponding to human ELK1.
Theoretical MW (kDa)	Calculated MW: 45 kD
Reactivity	Human
Form	Liquid
Purification	Affinity purification
Isotype	IgG
Recommend Usage	ChIP (1:20) Immunohistochemistry (1:50-1:100) Immunoprecipitation(1:20) Western Blot (1:500-1:1000) The optimal working dilution should be determined by the end user.

Storage Buffer	In 50 mM Tris-Glycine, pH 7.4 (0.15 M NaCl, 40% Glycerol, 0.01% Sodium azide and 0.05% BSA)
Storage Instruction	Store at -20 °C. Aliquot to avoid repeated freezing and thawing.
Note	This product contains sodium azide: a POISONOUS AND HAZARDOUS SUBSTANCE which should be handled by trained staff only.

Applications

- ChIP

- Western Blot

Western Blot analysis of HeLa lysates with ELK1 recombinant monoclonal antibody, clone R06-5J2 (Cat # RAB02304).

- Immunohistochemistry (Formalin/PFA-fixed paraffin-embedded sections)

- Immunoprecipitation

Gene Info — ELK1

Entrez GeneID	2002
Protein Accession#	P19419
Gene Name	ELK1
Gene Alias	-
Gene Description	ELK1, member of ETS oncogene family
Omim ID	311040
Gene Ontology	Hyperlink
Gene Summary	This gene is a member of the Ets family of transcription factors and of the ternary complex factor (TCF) subfamily. Proteins of the TCF subfamily form a ternary complex by binding to the the serum response factor and the serum response element in the promoter of the c-fos proto-oncogene. The protein encoded by this gene is a nuclear target for the ras-raf-MAPK signaling cascade. Alternatively spliced transcript variants encoding the same protein have been found for this gene. [provided by RefSeq]
Other Designations	ELK1 protein OTTHUMP00000023224 OTTHUMP00000023225

Pathway

- [Endometrial cancer](#)
- [ErbB signaling pathway](#)
- [Focal adhesion](#)
- [GnRH signaling pathway](#)
- [Insulin signaling pathway](#)
- [MAPK signaling pathway](#)
- [Prion diseases](#)

Disease

- [Cardiovascular Diseases](#)
- [Diabetes Mellitus](#)
- [Edema](#)