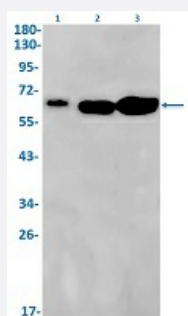


RecomAb™

# ELK1 recombinant monoclonal antibody, clone R08-6K4

Catalog # RAB02303      Size 100 uL

## Applications



### Western Blot

Western Blot analysis of Lane 1: C6, Lane 2: 3T3 and Lane 3: Hela lysates with ELK1 recombinant monoclonal antibody, clone R08-6K4 (Cat # RAB02303).

## Specification

<b>Product Description</b>	Rabbit recombinant monoclonal antibody raised against human ELK1.
<b>Antibody Species</b>	Rabbit
<b>Immunogen</b>	Original antibody is raised against a synthetic peptide corresponding to human ELK1.
<b>Theoretical MW (kDa)</b>	Calculated MW: 45 kD
<b>Reactivity</b>	Human, Mouse, Rat
<b>Form</b>	Liquid
<b>Purification</b>	Affinity purification
<b>Isotype</b>	IgG
<b>Recommend Usage</b>	Western Blot (1:500-1:1000) The optimal working dilution should be determined by the end user.
<b>Storage Buffer</b>	In 50 mM Tris-Glycine, pH 7.4 (0.15 M NaCl, 40% Glycerol, 0.01% Sodium azide and 0.05% BSA)

**Storage Instruction**

Store at -20 °C.  
Aliquot to avoid repeated freezing and thawing.

**Note**

This product contains sodium azide: a POISONOUS AND HAZARDOUS SUBSTANCE which should be handled by trained staff only.

## Applications

- Western Blot

Western Blot analysis of Lane 1: C6, Lane 2: 3T3 and Lane 3: Hela lysates with ELK1 recombinant monoclonal antibody, clone R08-6K4 (Cat # RAB02303).

## Gene Info — ELK1

**Entrez GeneID**[2002](#)**Protein Accession#**[P19419](#)**Gene Name**

ELK1

**Gene Alias**

-

**Gene Description**

ELK1, member of ETS oncogene family

**Omim ID**[311040](#)**Gene Ontology**[Hyperlink](#)**Gene Summary**

This gene is a member of the Ets family of transcription factors and of the ternary complex factor (TCF) subfamily. Proteins of the TCF subfamily form a ternary complex by binding to the the serum response factor and the serum response element in the promoter of the c-fos proto-oncogene. The protein encoded by this gene is a nuclear target for the ras-raf-MAPK signaling cascade. Alternatively spliced transcript variants encoding the same protein have been found for this gene. [provided by RefSeq]

**Other Designations**

ELK1 protein|OTTHUMP00000023224|OTTHUMP00000023225

## Pathway

- [Endometrial cancer](#)
- [ErbB signaling pathway](#)
- [Focal adhesion](#)

- [GnRH signaling pathway](#)
- [Insulin signaling pathway](#)
- [MAPK signaling pathway](#)
- [Prion diseases](#)

## Disease

- [Cardiovascular Diseases](#)
- [Diabetes Mellitus](#)
- [Edema](#)