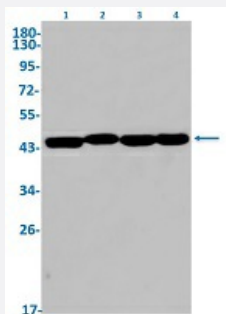


RecomAb™

# ENO3 recombinant monoclonal antibody, clone R07-5B2

Catalog # RAB02300      Size 100 uL

## Applications



### Western Blot

Western Blot analysis of Lane 1: rat brain, Lane 2: C6, Lane 3: 3T3 and Lane 4: HeLa lysates with ENO3 recombinant monoclonal antibody, clone R07-5B2 (Cat # RAB02300).

## Specification

<b>Product Description</b>	Rabbit recombinant monoclonal antibody raised against human ENO3.
<b>Antibody Species</b>	Rabbit
<b>Immunogen</b>	Original antibody is raised against a synthetic peptide corresponding to human ENO3.
<b>Theoretical MW (kDa)</b>	Calculated MW: 47 kD
<b>Reactivity</b>	Human, Mouse, Rat
<b>Form</b>	Liquid
<b>Purification</b>	Affinity purification
<b>Isotype</b>	IgG
<b>Recommend Usage</b>	Immunofluorescence(1:50-1:200) Western Blot (1:500-1:1000) The optimal working dilution should be determined by the end user.
<b>Storage Buffer</b>	In 50 mM Tris-Glycine, pH 7.4 (0.15 M NaCl, 40% Glycerol, 0.01% Sodium azide and 0.05% BSA)

**Storage Instruction**

Store at -20 °C.  
Aliquot to avoid repeated freezing and thawing.

**Note**

This product contains sodium azide: a POISONOUS AND HAZARDOUS SUBSTANCE which should be handled by trained staff only.

## Applications

- Western Blot

Western Blot analysis of Lane 1: rat brain, Lane 2: C6, Lane 3: 3T3 and Lane 4: Hela lysates with ENO3 recombinant monoclonal antibody, clone R07-5B2 (Cat # RAB02300).

- Immunofluorescence

## Gene Info — ENO3

**Entrez GeneID**[2027](#)**Protein Accession#**[P13929](#)**Gene Name**

ENO3

**Gene Alias**

MSE

**Gene Description**

enolase 3 (beta, muscle)

**Omim ID**[131370](#)**Gene Ontology**[Hyperlink](#)**Gene Summary**

This gene encodes one of the three enolase isoenzymes found in mammals. This isoenzyme, a homodimer, is found in skeletal muscle cells in the adult. A switch from alpha enolase to beta enolase occurs in muscle tissue during development in rodents. Mutations in this gene can be associated with metabolic myopathies that may result from decreased stability of the enzyme. Two transcripts have been identified for this gene that differ only in their 5' UTR. [provided by RefSeq]

**Other Designations**

2-phospho-D-glycerate hydrolyase|ENO3, muscle enolase 3 beta|OTTHUMP00000125242|beta enolase|enolase 3|enolase-3, beta, muscle|muscle specific enolase|skeletal muscle enolase

## Pathway

- [Biosynthesis of alkaloids derived from histidine and purine](#)

- [Biosynthesis of alkaloids derived from ornithine](#)
- [Biosynthesis of alkaloids derived from shikimate pathway](#)
- [Biosynthesis of alkaloids derived from terpenoid and polyketide](#)
- [Biosynthesis of phenylpropanoids](#)
- [Biosynthesis of plant hormones](#)
- [Biosynthesis of terpenoids and steroids](#)
- [Glycolysis / Gluconeogenesis](#)
- [Metabolic pathways](#)
- [RNA degradation](#)

## Disease

- [Muscular Dystrophies](#)