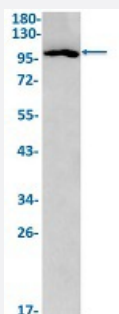


RecomAb™

RAPGEF3 recombinant monoclonal antibody, clone R05-6B2

Catalog # RAB02298 Size 100 uL

Applications



Western Blot

Western Blot analysis of 3T3 lysates with RAPGEF3 recombinant monoclonal antibody, clone R05-6B2 (Cat # RAB02298).

Specification

Product Description	Rabbit recombinant monoclonal antibody raised against human RAPGEF3.
Antibody Species	Rabbit
Immunogen	Original antibody is raised against a synthetic peptide corresponding to human RAPGEF3.
Theoretical MW (kDa)	Calculated MW: 104 k
Reactivity	Human, Mouse
Form	Liquid
Purification	Affinity purification
Isotype	IgG
Recommend Usage	Immunoprecipitation (1:20) Western Blot (1:500-1:1000) The optimal working dilution should be determined by the end user.
Storage Buffer	In 50 mM Tris-Glycine, pH 7.4 (0.15 M NaCl, 40% Glycerol, 0.01% Sodium azide and 0.05% BSA)

Storage Instruction

Store at -20 °C.
Aliquot to avoid repeated freezing and thawing.

Note

This product contains sodium azide: a POISONOUS AND HAZARDOUS SUBSTANCE which should be handled by trained staff only.

Applications

- Western Blot

Western Blot analysis of 3T3 lysates with RAPGEF3 recombinant monoclonal antibody, clone R05-6B2 (Cat # RAB02298).

- Immunoprecipitation

Gene Info — RAPGEF3

Entrez GeneID [10411](#)

Protein Accession# [O95398](#)

Gene Name RAPGEF3

Gene Alias CAMP-GEFI, EPAC, EPAC1, HSU79275, MGC21410, bcm910

Gene Description Rap guanine nucleotide exchange factor (GEF) 3

Omim ID [606057](#)

Gene Ontology [Hyperlink](#)

Other Designations 9330170P05Rik|Rap guanine nucleotide exchange factor 3|Rap1 guanine-nucleotide-exchange factor directly activated by cAMP|exchange protein directly activated by cAMP 1

Pathway

- [Leukocyte transendothelial migration](#)

- [Long-term potentiation](#)

Disease

- [Asthma](#)

- [Tobacco Use Disorder](#)