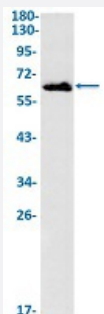


RecomAb™

# ECM1 recombinant monoclonal antibody, clone R07-7E8

Catalog # RAB02291      Size 100 uL

## Applications



### Western Blot

Western Blot analysis of Hela lysates with ECM1 recombinant monoclonal antibody, clone R07-7E8 (Cat # RAB02291).

## Specification

<b>Product Description</b>	Rabbit recombinant monoclonal antibody raised against human ECM1.
<b>Antibody Species</b>	Rabbit
<b>Immunogen</b>	Original antibody is raised against a synthetic peptide corresponding to human ECM1.
<b>Theoretical MW (kDa)</b>	Calculated MW: 61 kD
<b>Reactivity</b>	Human
<b>Form</b>	Liquid
<b>Purification</b>	Affinity purification
<b>Isotype</b>	IgG
<b>Recommend Usage</b>	Immunofluorescence (1:50-1:200) Immunohistochemistry (1:50-1:100) Immunoprecipitation (1:20) Western Blot (1:500-1:1000) The optimal working dilution should be determined by the end user.

Storage Buffer	In 50 mM Tris-Glycine, pH 7.4 (0.15 M NaCl, 40% Glycerol, 0.01% Sodium azide and 0.05% BSA)
Storage Instruction	Store at -20 °C. Aliquot to avoid repeated freezing and thawing.
Note	This product contains sodium azide: a POISONOUS AND HAZARDOUS SUBSTANCE which should be handled by trained staff only.

## Applications

- Western Blot

Western Blot analysis of Hela lysates with ECM1 recombinant monoclonal antibody, clone R07-7E8 (Cat # RAB02291).

- Immunohistochemistry

- Immunofluorescence

- Immunoprecipitation

## Gene Info — ECM1

Entrez GeneID	<a href="#">1893</a>
Protein Accession#	<a href="#">Q16610</a>
Gene Name	ECM1
Gene Alias	-
Gene Description	extracellular matrix protein 1
Omim ID	<a href="#">247100 602201</a>
Gene Ontology	<a href="#">Hyperlink</a>
Gene Summary	This gene encodes an extracellular protein containing motifs with a cysteine pattern characteristic of the cysteine pattern of the ligand-binding "double-loop" domains of the albumin protein family. This gene maps outside of the epidermal differentiation complex (EDC), a cluster of three gene families involved in epidermal differentiation. Alternatively spliced transcript variants encoding distinct isoforms have been described. [provided by RefSeq]
Other Designations	OTTHUMP00000014932 OTTHUMP00000014934 secretory component p85

## Disease

- [Colitis](#)
- [Genetic Predisposition to Disease](#)
- [Inflammatory Bowel Diseases](#)