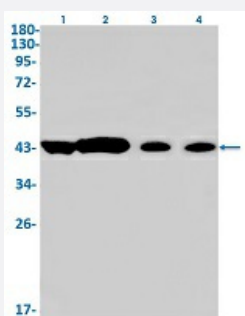


RecomAb™

GNAQ recombinant monoclonal antibody, clone R05-5D7

Catalog # RAB02243 Size 100 uL

Applications



Western Blot

Western Blot analysis of Lane 1: K562, Lane 2: rat brain, Lane 3: C6 and Lane 4: HeLa lysates with GNAQ recombinant monoclonal antibody, clone R05-5D7 (Cat # RAB02243).

Specification

Product Description	Rabbit recombinant monoclonal antibody raised against human GNAQ.
Antibody Species	Rabbit
Immunogen	Original antibody is raised against a synthetic peptide corresponding to human GNAQ.
Theoretical MW (kDa)	Calculated MW: 42 kD
Reactivity	Mouse, Rat
Form	Liquid
Purification	Affinity purification
Isotype	IgG
Recommend Usage	Western Blot (1:500-1:1000) The optimal working dilution should be determined by the end user.
Storage Buffer	In 50 mM Tris-Glycine, pH 7.4 (0.15 M NaCl, 40% Glycerol, 0.01% Sodium azide and 0.05% BSA)

Storage Instruction

Store at -20 °C.
Aliquot to avoid repeated freezing and thawing.

Note

This product contains sodium azide: a POISONOUS AND HAZARDOUS SUBSTANCE which should be handled by trained staff only.

Applications

- Western Blot

Western Blot analysis of Lane 1: K562, Lane 2: rat brain, Lane 3: C6 and Lane 4: Hela lysates with GNAQ recombinant monoclonal antibody, clone R05-5D7 (Cat # RAB02243).

Gene Info — GNAQ

Entrez GeneID[2776](#)**Protein Accession#**[P50148](#)**Gene Name**

GNAQ

Gene Alias

G-ALPHA-q, GAQ

Gene Description

guanine nucleotide binding protein (G protein), q polypeptide

Omim ID[600998](#)**Gene Ontology**[Hyperlink](#)**Gene Summary**

Guanine nucleotide-binding proteins are a family of heterotrimeric proteins that couple cell surface, 7-transmembrane domain receptors to intracellular signaling pathways. Receptor activation catalyzes the exchange of GTP for GDP bound to the inactive G protein alpha subunit resulting in a conformational change and dissociation of the complex. The G protein alpha and beta-gamma subunits are capable of regulating various cellular effectors. Activation is terminated by a GTPase intrinsic to the G-alpha subunit. G-alpha-q is the alpha subunit of one of the heterotrimeric GTP-binding proteins that mediates stimulation of phospholipase C-beta (MIM 600230).[supplied by OMIM]

Other Designations

-

Pathway

- [Calcium signaling pathway](#)
- [Gap junction](#)

- [GnRH signaling pathway](#)
- [Long-term depression](#)
- [Long-term potentiation](#)
- [Melanogenesis](#)
- [Vascular smooth muscle contraction](#)

Disease

- [Conjunctival Neoplasms](#)
- [Melanoma](#)
- [Melanosis](#)
- [Neoplasms](#)
- [Nevus](#)
- [Thyroid Diseases](#)
- [Uveal Neoplasms](#)