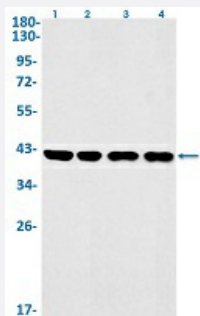


RecomAb™

# ACKR3 recombinant monoclonal antibody, clone R08-6H8

Catalog # RAB02241      Size 100 uL

## Applications



### Western Blot

Western Blot analysis of Lane 1: K562, Lane 2: C6, Lane 3: 3T3 and Lane 4: HeLa lysates with ACKR3 recombinant monoclonal antibody, clone R08-6H8 (Cat # RAB02241).

## Specification

<b>Product Description</b>	Rabbit recombinant monoclonal antibody raised against human ACKR3.
<b>Antibody Species</b>	Rabbit
<b>Immunogen</b>	Original antibody is raised against a synthetic peptide corresponding to human ACKR3.
<b>Theoretical MW (kDa)</b>	Calculated MW: 41 kD
<b>Reactivity</b>	Human, Mouse, Rat
<b>Form</b>	Liquid
<b>Purification</b>	Affinity purification
<b>Isotype</b>	IgG
<b>Recommend Usage</b>	Western Blot (1:500-1:1000) The optimal working dilution should be determined by the end user.
<b>Storage Buffer</b>	In 50 mM Tris-Glycine, pH 7.4 (0.15 M NaCl, 40% Glycerol, 0.01% Sodium azide and 0.05% BSA)

**Storage Instruction**

Store at -20 °C.  
Aliquot to avoid repeated freezing and thawing.

**Note**

This product contains sodium azide: a POISONOUS AND HAZARDOUS SUBSTANCE which should be handled by trained staff only.

## Applications

- Western Blot

Western Blot analysis of Lane 1: K562, Lane 2: C6, Lane 3: 3T3 and Lane 4: Hela lysates with ACKR3 recombinant monoclonal antibody, clone R08-6H8 (Cat # RAB02241).

## Gene Info — CXCR7

**Entrez GeneID**[57007](#)**Protein Accession#**[P25106](#)**Gene Name**

CXCR7

**Gene Alias**

CMKOR1, GPR159, RDC1

**Gene Description**

chemokine (C-X-C motif) receptor 7

**Omim ID**[610376](#)**Gene Ontology**[Hyperlink](#)**Gene Summary**

This gene encodes a member of the G-protein coupled receptor family. Although this protein was earlier thought to be a receptor for vasoactive intestinal peptide (VIP), it is now considered to be an orphan receptor, in that its endogenous ligand has not been identified. The protein is also a co receptor for human immunodeficiency viruses (HIV). Translocations involving this gene and HMG A2 on chromosome 12 have been observed in lipomas. [provided by RefSeq]

**Other Designations**

G protein-coupled receptor|chemokine orphan receptor 1

## Disease

- [HIV Infections](#)