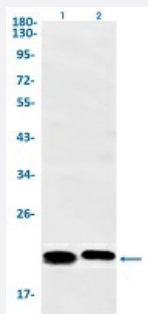


RecomAb™

CBX5 recombinant monoclonal antibody, clone R09-9D5

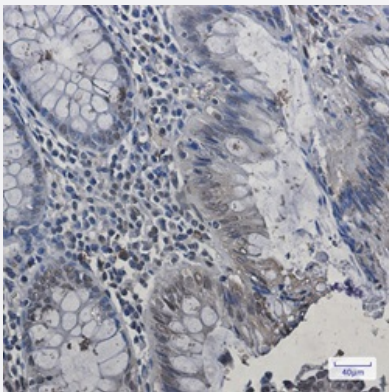
Catalog # RAB02206 Size 100 uL

Applications



Western Blot

Western Blot analysis of Lane 1: 3T3 and Lane 2: Hela lysates with CBX5 recombinant monoclonal antibody, clone R09-9D5 (Cat # RAB02206).



Immunohistochemistry (Formalin/PFA-fixed paraffin-embedded sections)

Immunohistochemical staining (Formalin-fixed paraffin-embedded sections) of human colon cancer with CBX5 recombinant monoclonal antibody, clone R09-9D5 (Cat # RAB02206). High-pressure and temperature Sodium Citrate pH 6.0 was used for antigen retrieval.

Specification

Product Description	Rabbit recombinant monoclonal antibody raised against human CBX5.
Antibody Species	Rabbit
Immunogen	Original antibody is raised against a synthetic peptide corresponding to human CBX5.
Theoretical MW (kDa)	Calculated MW: 22 kD
Reactivity	Human, Mouse, Rat

Form	Liquid
Purification	Affinity purification
Isotype	IgG
Recommend Usage	Immunofluorescence(1:50-1:200) Immunohistochemistry (1:50-1:100) Immunoprecipitation(1:20) Western Blot (1:500-1:1000) The optimal working dilution should be determined by the end user.
Storage Buffer	In 50 mM Tris-Glycine, pH 7.4 (0.15 M NaCl, 40% Glycerol, 0.01% Sodium azide and 0.05% BSA)
Storage Instruction	Store at -20 °C. Aliquot to avoid repeated freezing and thawing.
Note	This product contains sodium azide: a POISONOUS AND HAZARDOUS SUBSTANCE which should be handled by trained staff only.

Applications

- Western Blot

Western Blot analysis of Lane 1: 3T3 and Lane 2: Hela lysates with CBX5 recombinant monoclonal antibody, clone R09-9D5 (Cat # RAB02206).

- Immunohistochemistry (Formalin/PFA-fixed paraffin-embedded sections)

Immunohistochemical staining (Formalin-fixed paraffin-embedded sections) of human colon cancer with CBX5 recombinant monoclonal antibody, clone R09-9D5 (Cat # RAB02206). High-pressure and temperature Sodium Citrate pH 6.0 was used for antigen retrieval.

- Immunohistochemistry

- Immunofluorescence

- Immunoprecipitation

Gene Info — CBX5

Entrez GeneID	23468
Protein Accession#	P45973
Gene Name	CBX5

Gene Alias	HP1, HP1A
Gene Description	chromobox homolog 5 (HP1 alpha homolog, Drosophila)
Omim ID	604478
Gene Ontology	Hyperlink
Gene Summary	<p>This gene encodes a highly conserved nonhistone protein, which is a member of the heterochromatin protein family. The protein is enriched in the heterochromatin and associated with centromeres. The protein has a single N-terminal chromodomain which can bind to histone proteins via methylated lysine residues, and a C-terminal chromo shadow-domain (CSD) which is responsible for the homodimerization and interaction with a number of chromatin-associated nonhistone proteins. The encoded product is involved in the formation of functional kinetochore through interaction with essential kinetochore proteins. The gene has a pseudogene located on chromosome 3. Multiple alternatively spliced variants, encoding the same protein, have been identified. [provided by RefSeq]</p>
Other Designations	HP1-ALPHA HP1Hs alpha antigen p25 heterochromatin protein 1 homolog alpha heterochromatin protein 1-alpha