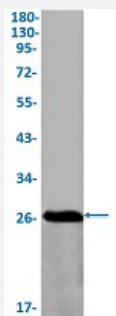


RecomAb™

HSPB1 recombinant monoclonal antibody, clone R03-9F4

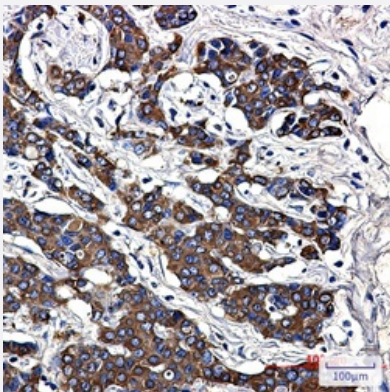
Catalog # RAB02200 Size 100 uL

Applications



Western Blot

Western Blot analysis of K562 lysates with HSPB1 recombinant monoclonal antibody, clone R03-9F4 (Cat # RAB02200).



Immunohistochemistry (Formalin/PFA-fixed paraffin-embedded sections)

Immunohistochemical staining (Formalin-fixed paraffin-embedded sections) of human breast cancer with HSPB1 recombinant monoclonal antibody, clone R03-9F4 (Cat # RAB02200). High-pressure and temperature Sodium Citrate pH 6.0 was used for antigen retrieval.

Specification

Product Description	Rabbit recombinant monoclonal antibody raised against human HSPB1.
Antibody Species	Rabbit
Immunogen	Original antibody is raised against a synthetic peptide corresponding to human HSPB1.
Theoretical MW (kDa)	Calculated MW: 23 kD
Reactivity	Human

Form	Liquid
Purification	Affinity purification
Isotype	IgG
Recommend Usage	Immunohistochemistry (1:50-1:100) Western Blot (1:500-1:1000) The optimal working dilution should be determined by the end user.
Storage Buffer	In 50 mM Tris-Glycine, pH 7.4 (0.15 M NaCl, 40% Glycerol, 0.01% Sodium azide and 0.05% BSA)
Storage Instruction	Store at -20 °C. Aliquot to avoid repeated freezing and thawing.
Note	This product contains sodium azide: a POISONOUS AND HAZARDOUS SUBSTANCE which should be handled by trained staff only.

Applications

- Western Blot

Western Blot analysis of K562 lysates with HSPB1 recombinant monoclonal antibody, clone R03-9F4 (Cat # RAB02200).

- Immunohistochemistry (Formalin/PFA-fixed paraffin-embedded sections)

Immunohistochemical staining (Formalin-fixed paraffin-embedded sections) of human breast cancer with HSPB1 recombinant monoclonal antibody, clone R03-9F4 (Cat # RAB02200). High-pressure and temperature Sodium Citrate pH 6.0 was used for antigen retrieval.

Gene Info — HSPB1

Entrez GeneID	3315
Protein Accession#	P04792
Gene Name	HSPB1
Gene Alias	CMT2F, DKFZp586P1322, HMN2B, HS.76067, HSP27, HSP28, Hsp25, SRP27
Gene Description	heat shock 27kDa protein 1
Omim ID	602195 606595 608634
Gene Ontology	Hyperlink

Gene Summary

The protein encoded by this gene is induced by environmental stress and developmental changes. The encoded protein is involved in stress resistance and actin organization and translocates from the cytoplasm to the nucleus upon stress induction. Defects in this gene are a cause of Charcot-Marie-Tooth disease type 2F (CMT2F) and distal hereditary motor neuropathy (dHMN). [provided by RefSeq]

Other Designations

OTTHUMP00000024846|estrogen-regulated 24 kDa protein|heat shock 27kD protein 1|heat shock protein beta-1|stress-responsive protein 27

Pathway

- [MAPK signaling pathway](#)
- [VEGF signaling pathway](#)

Disease

- [Adenocarcinoma](#)
- [Carcinoma](#)
- [Charcot-Marie-Tooth Disease](#)
- [Diabetic Nephropathies](#)
- [Genetic Predisposition to Disease](#)
- [Lung Neoplasms](#)
- [Small Cell Lung Carcinoma](#)