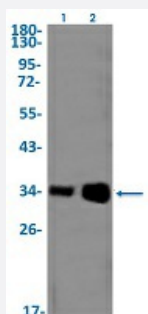


RecomAb™

HTRA2 recombinant monoclonal antibody, clone R06-9E4

Catalog # RAB02192 Size 100 uL

Applications



Western Blot

Western Blot analysis of Lane 1: 3T3 and Lane 2: Hela lysates with HTRA2 recombinant monoclonal antibody, clone R06-9E4 (Cat # RAB02192).

Specification

Product Description	Rabbit recombinant monoclonal antibody raised against human HTRA2.
Antibody Species	Rabbit
Immunogen	Original antibody is raised against a synthetic peptide corresponding to human HTRA2.
Theoretical MW (kDa)	Calculated MW: 49 kD
Reactivity	Human, Mouse
Form	Liquid
Purification	Affinity purification
Isotype	IgG
Recommend Usage	Immunofluorescence(1:50-1:200) Immunohistochemistry (1:50-1:100) Immunoprecipitation(1:20) Western Blot (1:500-1:1000) The optimal working dilution should be determined by the end user.

Storage Buffer	In 50 mM Tris-Glycine, pH 7.4 (0.15 M NaCl, 40% Glycerol, 0.01% Sodium azide and 0.05% BSA)
Storage Instruction	Store at -20 °C. Aliquot to avoid repeated freezing and thawing.
Note	This product contains sodium azide: a POISONOUS AND HAZARDOUS SUBSTANCE which should be handled by trained staff only.

Applications

- Western Blot

Western Blot analysis of Lane 1: 3T3 and Lane 2: Hela lysates with HTRA2 recombinant monoclonal antibody, clone R06-9E4 (Cat # RAB02192).

- Immunohistochemistry

- Immunofluorescence

- Immunoprecipitation

Gene Info — HTRA2

Entrez GeneID	27429
---------------	-----------------------

Protein Accession#	O43464
--------------------	------------------------

Gene Name	HTRA2
-----------	-------

Gene Alias	OMI, PARK13, PRSS25
------------	---------------------

Gene Description	HtrA serine peptidase 2
------------------	-------------------------

Omim ID	606441 610297
---------	---

Gene Ontology	Hyperlink
---------------	---------------------------

Gene Summary	<p>This gene encodes a serine protease. The protein has been localized in the endoplasmic reticulum and interacts with an alternatively spliced form of mitogen-activated protein kinase 14. The protein has also been localized to the mitochondria with release to the cytosol following apoptotic stimulus. The protein is thought to induce apoptosis by binding the apoptosis inhibitory protein baculoviral IAP repeat-containing 4. Nuclear localization of this protein has also been observed. Alternative splicing of this gene results in two transcript variants encoding different isoforms. Additional transcript variants have been described, but their full-length sequences have not been determined. [provided by RefSeq]</p>
--------------	--

Other Designations

HtrA-like serine protease|Omi stress-regulated endoprotease|high temperature requirement protease in A2|protease, serine, 25

Disease

- [Genetic Predisposition to Disease](#)
- [Parkinson disease](#)
- [Parkinsonian Disorders](#)