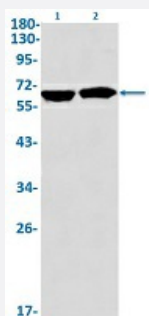


RecomAb™

IGF2BP1 recombinant monoclonal antibody, clone R03-9K3

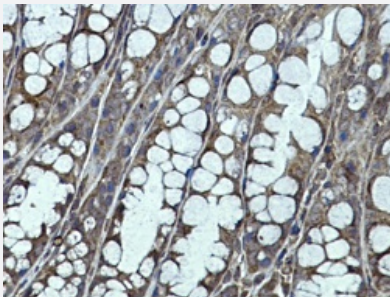
Catalog # RAB02184 Size 100 uL

Applications



Western Blot

Western Blot analysis of Lane 1: K562 and Lane 2: 3T3 lysates with IGF2BP1 recombinant monoclonal antibody, clone R03-9K3 (Cat # RAB02184).



Immunohistochemistry (Formalin/PFA-fixed paraffin-embedded sections)

Immunohistochemical staining (Formalin-fixed paraffin-embedded sections) of mouse colon with IGF2BP1 recombinant monoclonal antibody, clone R03-9K3 (Cat # RAB02184). High-pressure and temperature Sodium Citrate pH 6.0 was used for antigen retrieval.

Specification

Product Description	Rabbit recombinant monoclonal antibody raised against human IGF2BP1.
Antibody Species	Rabbit
Immunogen	Original antibody is raised against recombinant protein corresponding to human IGF2BP1.
Theoretical MW (kDa)	Calculated MW: 63 kD
Reactivity	Human, Mouse
Form	Liquid

Purification	Affinity purification
Isotype	IgG
Recommend Usage	Immunohistochemistry (1:50-1:100) Immunoprecipitation(1:20) Western Blot (1:500-1:1000) The optimal working dilution should be determined by the end user.
Storage Buffer	In 50 mM Tris-Glycine, pH 7.4 (0.15 M NaCl, 40% Glycerol, 0.01% Sodium azide and 0.05% BSA)
Storage Instruction	Store at -20 °C. Aliquot to avoid repeated freezing and thawing.
Note	This product contains sodium azide: a POISONOUS AND HAZARDOUS SUBSTANCE which should be handled by trained staff only.

Applications

- Western Blot

Western Blot analysis of Lane 1: K562 and Lane 2: 3T3 lysates with IGF2BP1 recombinant monoclonal antibody, clone R03-9K3 (Cat # RAB02184).

- Immunohistochemistry (Formalin/PFA-fixed paraffin-embedded sections)

Immunohistochemical staining (Formalin-fixed paraffin-embedded sections) of mouse colon with IGF2BP1 recombinant monoclonal antibody, clone R03-9K3 (Cat # RAB02184). High-pressure and temperature Sodium Citrate pH 6.0 was used for antigen retrieval.

- Immunoprecipitation

Gene Info — IGF2BP1

Entrez GeneID	10642
Protein Accession#	Q9NZI8
Gene Name	IGF2BP1
Gene Alias	CRD-BP, CRDBP, IMP-1, IMP1, VICKZ1, ZBP1
Gene Description	insulin-like growth factor 2 mRNA binding protein 1
Omim ID	608288
Gene Ontology	Hyperlink

Gene Summary

This gene encodes a member of the insulin-like growth factor 2 mRNA-binding protein family. The protein encoded by this gene contains four K homology domains and two RNA recognition motifs. It functions by binding to the mRNAs of certain genes, including insulin-like growth factor 2, beta-actin and beta-transducin repeat-containing protein, and regulating their translation. Two transcript variants encoding different isoforms have been found for this gene. [provided by RefSeq]

Other Designations

IGF II mRNA binding protein 1|IGF-II mRNA-binding protein 1|coding region determinant-binding protein

Disease

- [Atherosclerosis](#)
- [Diabetes Mellitus](#)
- [Genetic Predisposition to Disease](#)
- [Head and Neck Neoplasms](#)
- [Insulin Resistance](#)
- [Metabolic Syndrome X](#)
- [Neoplasm Recurrence](#)
- [Neoplasms](#)
- [Obesity](#)