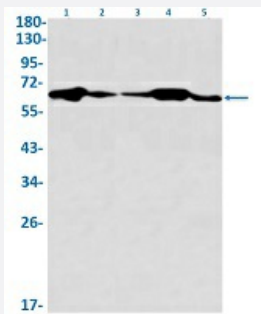


RecomAb™

# IGF2BP3 recombinant monoclonal antibody, clone R04-7F2

Catalog # RAB02174      Size 100 uL

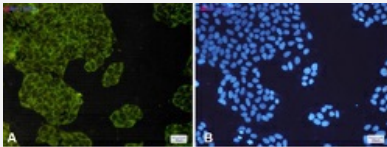
## Applications



### Western Blot

Western Blot analysis of Lane 1: K562, Lane 2: rat brain, Lane 3: C6, Lane 4: 3T3 and Lane 5: HeLa lysates with IGF2BP3 recombinant monoclonal antibody, clone R04-7F2 (Cat # RAB02174).

### Immunocytochemistry



Immunocytochemical staining of HeLa with IGF2BP3 recombinant monoclonal antibody, clone R04-7F2 (Cat # RAB02174). (A) IGF2BP3 (green) and (B) DAPI (blue).

## Specification

<b>Product Description</b>	Rabbit recombinant monoclonal antibody raised against human IGF2BP3.
<b>Antibody Species</b>	Rabbit
<b>Immunogen</b>	Original antibody is raised against recombinant protein corresponding to human IGF2BP3.
<b>Theoretical MW (kDa)</b>	Calculated MW: 64 kD
<b>Reactivity</b>	Human, Mouse, Rat
<b>Form</b>	Liquid

<b>Purification</b>	Affinity purification
<b>Isotype</b>	IgG
<b>Recommend Usage</b>	Immunocytochemistry Immunofluorescence(1:50-1:200) Immunoprecipitation(1:20) Western Blot (1:500-1:1000) The optimal working dilution should be determined by the end user.
<b>Storage Buffer</b>	In 50 mM Tris-Glycine, pH 7.4 (0.15 M NaCl, 40% Glycerol, 0.01% Sodium azide and 0.05% BSA)
<b>Storage Instruction</b>	Store at -20 °C. Aliquot to avoid repeated freezing and thawing.
<b>Note</b>	This product contains sodium azide: a POISONOUS AND HAZARDOUS SUBSTANCE which should be handled by trained staff only.

## Applications

- Western Blot

Western Blot analysis of Lane 1: K562, Lane 2: rat brain, Lane 3: C6, Lane 4: 3T3 and Lane 5: Hela lysates with IGF2BP3 recombinant monoclonal antibody, clone R04-7F2 (Cat # RAB02174).

- Immunocytochemistry

Immunocytochemical staining of Hela with IGF2BP3 recombinant monoclonal antibody, clone R04-7F2 (Cat # RAB02174). (A) IGF2BP3 (green) and (B) DAPI (blue).

- Immunofluorescence

- Immunoprecipitation

## Gene Info — IGF2BP3

<b>Entrez GeneID</b>	<a href="#">10643</a>
<b>Protein Accession#</b>	<a href="#">O00425</a>
<b>Gene Name</b>	IGF2BP3
<b>Gene Alias</b>	DKFZp686F1078, IMP-3, IMP3, KOC1, VICKZ3
<b>Gene Description</b>	insulin-like growth factor 2 mRNA binding protein 3

Omim ID [608259](#)

Gene Ontology [Hyperlink](#)

**Gene Summary** The protein encoded by this gene is primarily found in the nucleolus, where it can bind to the 5' UT R of the insulin-like growth factor II leader 3 mRNA and may repress translation of insulin-like growth factor II during late development. The encoded protein contains several KH domains, which are important in RNA binding and are known to be involved in RNA synthesis and metabolism. A pseudogene exists on chromosome 7, and there are putative pseudogenes on other chromosomes. [provided by RefSeq]

**Other Designations** IGF II mRNA binding protein 3|IGF-II mRNA-binding protein 3|KH domain containing protein overexpressed in cancer

## Disease

- [Cardiovascular Diseases](#)
- [Diabetes Mellitus](#)
- [Edema](#)
- [Genetic Predisposition to Disease](#)
- [Metabolic Syndrome X](#)
- [Obesity](#)
- [Tobacco Use Disorder](#)