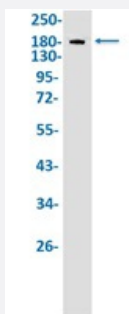


RecomAb™

IQGAP2 recombinant monoclonal antibody, clone R02-117

Catalog # RAB02164 Size 100 uL

Applications



Western Blot

Western Blot analysis of Ramos lysates with IQGAP2 recombinant monoclonal antibody, clone R02-117 (Cat # RAB02164).

Specification

Product Description	Rabbit recombinant monoclonal antibody raised against human IQGAP2.
Antibody Species	Rabbit
Immunogen	Original antibody is raised against recombinant protein corresponding to human IQGAP2.
Theoretical MW (kDa)	Calculated MW: 181 k
Reactivity	Human
Form	Liquid
Purification	Affinity purification
Isotype	IgG
Recommend Usage	Immunohistochemistry (1:50-1:100) Western Blot (1:500-1:1000) The optimal working dilution should be determined by the end user.
Storage Buffer	In 50 mM Tris-Glycine, pH 7.4 (0.15 M NaCl, 40% Glycerol, 0.01% Sodium azide and 0.05% BSA)

Storage Instruction

Store at -20 °C.
Aliquot to avoid repeated freezing and thawing.

Note

This product contains sodium azide: a POISONOUS AND HAZARDOUS SUBSTANCE which should be handled by trained staff only.

Applications

- Western Blot

Western Blot analysis of Ramos lysates with IQGAP2 recombinant monoclonal antibody, clone R02-117 (Cat # RAB02164).

- Immunohistochemistry (Formalin/PFA-fixed paraffin-embedded sections)

Gene Info — IQGAP2

Entrez GeneID [10788](#)

Protein Accession# [Q13576](#)

Gene Name IQGAP2

Gene Alias -

Gene Description IQ motif containing GTPase activating protein 2

Omim ID [605401](#)

Gene Ontology [Hyperlink](#)

Gene Summary This gene encodes a member of the IQGAP family. The protein contains three IQ domains, one calponin homology domain, one Ras-GAP domain and one WW domain. It interacts with components of the cytoskeleton, with cell adhesion molecules, and with several signaling molecules to regulate cell morphology and motility. [provided by RefSeq]

Other Designations -

Pathway

- [Regulation of actin cytoskeleton](#)

Disease

- [Cardiovascular Diseases](#)
- [Diabetes Mellitus](#)
- [Edema](#)
- [Hearing Loss](#)
- [Tobacco Use Disorder](#)