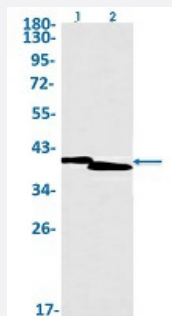


RecomAb™

ISL1 recombinant monoclonal antibody, clone R05-2C3

Catalog # RAB02159 Size 100 uL

Applications



Western Blot

Western Blot analysis of Lane 1: K562 and Lane 2: rat brain lysates with ISL1 recombinant monoclonal antibody, clone R05-2C3 (Cat # RAB02159).

Specification

Product Description	Rabbit recombinant monoclonal antibody raised against human ISL1.
Antibody Species	Rabbit
Immunogen	Original antibody is raised against recombinant protein corresponding to human ISL1.
Theoretical MW (kDa)	Calculated MW: 39 kD
Reactivity	Human, Rat
Form	Liquid
Purification	Affinity purification
Isotype	IgG
Recommend Usage	Immunohistochemistry (1:50-1:100) Immunoprecipitation(1:20) Western Blot (1:500-1:1000) The optimal working dilution should be determined by the end user.
Storage Buffer	In 50 mM Tris-Glycine, pH 7.4 (0.15 M NaCl, 40% Glycerol, 0.01% Sodium azide and 0.05% BSA)

Storage Instruction

Store at -20 °C.
Aliquot to avoid repeated freezing and thawing.

Note

This product contains sodium azide: a POISONOUS AND HAZARDOUS SUBSTANCE which should be handled by trained staff only.

Applications

- Western Blot

Western Blot analysis of Lane 1: K562 and Lane 2: rat brain lysates with ISL1 recombinant monoclonal antibody, clone R05-2C3 (Cat # RAB02159).

- Immunohistochemistry (Formalin/PFA-fixed paraffin-embedded sections)

- Immunoprecipitation

Gene Info — ISL1

Entrez GeneID [3670](#)

Protein Accession# [P61371](#)

Gene Name ISL1

Gene Alias Isl-1

Gene Description ISL LIM homeobox 1

Omim ID [600366](#)

Gene Ontology [Hyperlink](#)

Gene Summary This gene encodes a member of the LIM/homeodomain family of transcription factors. The encoded protein binds to the enhancer region of the insulin gene, among others, and may play an important role in regulating insulin gene expression. The encoded protein is central to the development of pancreatic cell lineages and may also be required for motor neuron generation. Mutations in this gene have been associated with maturity-onset diabetes of the young. [provided by RefSeq]

Other Designations ISL1 transcription factor, LIM/homeodomain|islet-1

Disease

- [Attention Deficit Disorder with Hyperactivity](#)

- [Diabetes Mellitus](#)
- [Genetic Predisposition to Disease](#)
- [Heart Defects](#)
- [Tourette Syndrome](#)