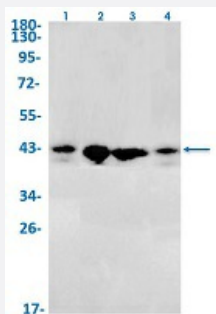


RecomAb™

# JUNB recombinant monoclonal antibody, clone R01-9B7

Catalog # RAB02154      Size 100 uL

## Applications



### Western Blot

Western Blot analysis of Lane 1: K562, Lane 2: C6, Lane 3: 3T3 and Lane 4: Hela lysates with JUNB recombinant monoclonal antibody, clone R01-9B7 (Cat # RAB02154).

## Specification

Product Description	Rabbit recombinant monoclonal antibody raised against human JUNB.
Antibody Species	Rabbit
Immunogen	Original antibody is raised against a synthetic peptide corresponding to human JUNB.
Theoretical MW (kDa)	Calculated MW: 36 kD
Reactivity	Human, Mouse, Rat
Form	Liquid
Purification	Affinity purification
Isotype	IgG
Recommend Usage	Immunoprecipitation(1:20) Western Blot (1:500-1:1000) The optimal working dilution should be determined by the end user.
Storage Buffer	In 50 mM Tris-Glycine, pH 7.4 (0.15 M NaCl, 40% Glycerol, 0.01% Sodium azide and 0.05% BSA)

**Storage Instruction**

Store at -20 °C.  
Aliquot to avoid repeated freezing and thawing.

**Note**

This product contains sodium azide: a POISONOUS AND HAZARDOUS SUBSTANCE which should be handled by trained staff only.

## Applications

- Western Blot

Western Blot analysis of Lane 1: K562, Lane 2: C6, Lane 3: 3T3 and Lane 4: Hela lysates with JUNB recombinant monoclonal antibody, clone R01-9B7 (Cat # RAB02154).

- Immunoprecipitation

## Gene Info — JUNB

**Entrez GeneID**[3726](#)**Protein Accession#**[P17275](#)**Gene Name**

JUNB

**Gene Alias**

AP-1

**Gene Description**

jun B proto-oncogene

**Omim ID**[165161](#)**Gene Ontology**[Hyperlink](#)**Other Designations**

activator protein 1

## Disease

- [Alzheimer disease](#)

- [Cognition](#)