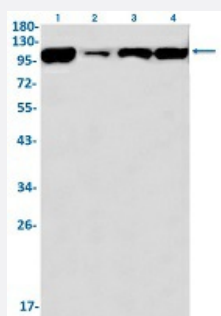


RecomAb™

TRIM28 recombinant monoclonal antibody, clone R07-5E6

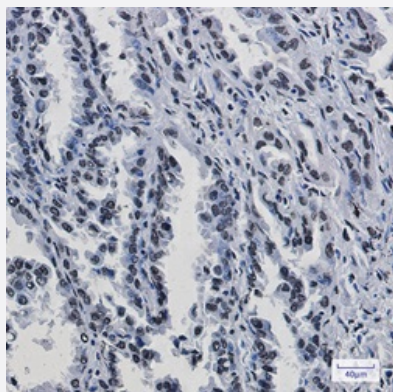
Catalog # RAB02152 Size 100 uL

Applications



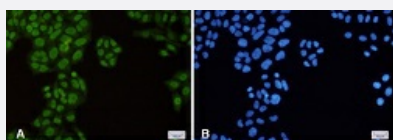
Western Blot

Western Blot analysis of Lane 1: K562, Lane 2: C6, Lane 3: 3T3 and Lane 4: HeLa lysates with TRIM28 recombinant monoclonal antibody, clone R07-5E6 (Cat # RAB02152).



Immunohistochemistry (Formalin/PFA-fixed paraffin-embedded sections)

Immunohistochemical staining (Formalin-fixed paraffin-embedded sections) of human lung cancer with TRIM28 recombinant monoclonal antibody, clone R07-5E6 (Cat # RAB02152). High-pressure and temperature Sodium Citrate pH 6.0 was used for antigen retrieval.



Immunocytochemistry

Immunocytochemical staining of HeLa with TRIM28 recombinant monoclonal antibody, clone R07-5E6 (Cat # RAB02152). (A) TRIM28 (green) and (B) DAPI (blue).

Specification

Product Description	Rabbit recombinant monoclonal antibody raised against human TRIM28.
Antibody Species	Rabbit
Immunogen	Original antibody is raised against a synthetic peptide corresponding to human TRIM28.
Theoretical MW (kDa)	Calculated MW: 89 kD
Reactivity	Human, Mouse, Rat
Form	Liquid
Purification	Affinity purification
Isotype	IgG
Recommend Usage	Immunocytochemistry Immunofluorescence(1:50-1:200) Immunohistochemistry (1:50-1:100) Western Blot (1:500-1:1000) The optimal working dilution should be determined by the end user.
Storage Buffer	In 50 mM Tris-Glycine, pH 7.4 (0.15 M NaCl, 40% Glycerol, 0.01% Sodium azide and 0.05% BSA)
Storage Instruction	Store at -20 °C. Aliquot to avoid repeated freezing and thawing.
Note	This product contains sodium azide: a POISONOUS AND HAZARDOUS SUBSTANCE which should be handled by trained staff only.

Applications

- Western Blot

Western Blot analysis of Lane 1: K562, Lane 2: C6, Lane 3: 3T3 and Lane 4: Hela lysates with TRIM28 recombinant monoclonal antibody, clone R07-5E6 (Cat # RAB02152).

- Immunohistochemistry (Formalin/PFA-fixed paraffin-embedded sections)

Immunohistochemical staining (Formalin-fixed paraffin-embedded sections) of human lung cancer with TRIM28 recombinant monoclonal antibody, clone R07-5E6 (Cat # RAB02152). High-pressure and temperature Sodium Citrate pH 6.0 was used for antigen retrieval.

- Immunohistochemistry

- Immunocytochemistry

Immunocytochemical staining of Hela with TRIM28 recombinant monoclonal antibody, clone R07-5E6 (Cat # RAB02152). (A) TRIM28 (green) and (B) DAPI (blue).

- Immunofluorescence

Gene Info — TRIM28

Entrez GeneID	10155
Protein Accession#	Q13263
Gene Name	TRIM28
Gene Alias	FLJ29029, KAP1, RNF96, TF1B, TIF1B
Gene Description	tripartite motif-containing 28
Omim ID	601742
Gene Ontology	Hyperlink
Gene Summary	<p>The protein encoded by this gene mediates transcriptional control by interaction with the Kruppel-associated box repression domain found in many transcription factors. The protein localizes to the nucleus and is thought to associate with specific chromatin regions. The protein is a member of the tripartite motif family. This tripartite motif includes three zinc-binding domains, a RING, a B-box type 1 and a B-box type 2, and a coiled-coil region. [provided by RefSeq]</p>
Other Designations	KRAB-associated protein 1 nuclear corepressor KAP-1 transcriptional intermediary factor 1-beta tripartite motif-containing 28 protein