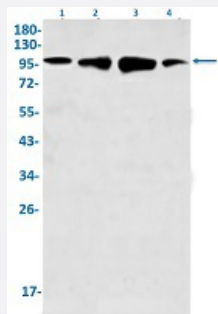


RecomAb™

# KIF5B recombinant monoclonal antibody, clone R04-6G8

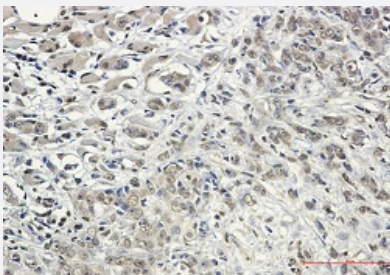
Catalog # RAB02150      Size 100 uL

## Applications



### Western Blot

Western Blot analysis of Lane 1: HeLa, Lane 2: MCF-7, Lane 3: U251MG and Lane 4: K562 lysates with KIF5B recombinant monoclonal antibody, clone R04-6G8 (Cat # RAB02150).



### Immunohistochemistry (Formalin/PFA-fixed paraffin-embedded sections)

Immunohistochemical staining (Formalin/PFA-fixed paraffin-embedded sections) of human breast cancer with KIF5B recombinant monoclonal antibody, clone R04-6G8 (Cat # RAB02150). High-pressure and temperature Sodium Citrate pH 6.0 was used for antigen retrieval.

## Specification

<b>Product Description</b>	Rabbit recombinant monoclonal antibody raised against human KIF5B.
<b>Antibody Species</b>	Rabbit
<b>Immunogen</b>	Original antibody is raised against a synthetic peptide corresponding to human KIF5B.
<b>Theoretical MW (kDa)</b>	Calculated MW: 110 k
<b>Reactivity</b>	Human, Mouse, Rat
<b>Form</b>	Liquid

Purification	Affinity purification
Isotype	IgG
Recommend Usage	Immunofluorescence(1:50-1:200) Immunohistochemistry (1:50-1:100) Immunoprecipitation(1:20) Western Blot (1:500-1:1000) The optimal working dilution should be determined by the end user.
Storage Buffer	In 50 mM Tris-Glycine, pH 7.4 (0.15 M NaCl, 40% Glycerol, 0.01% Sodium azide and 0.05% BSA)
Storage Instruction	Store at -20 °C. Aliquot to avoid repeated freezing and thawing.
Note	This product contains sodium azide: a POISONOUS AND HAZARDOUS SUBSTANCE which should be handled by trained staff only.

## Applications

- Western Blot

Western Blot analysis of Lane 1: HeLa, Lane 2: MCF-7, Lane 3: U251MG and Lane 4: K562 lysates with KIF5B recombinant monoclonal antibody, clone R04-6G8 (Cat # RAB02150).

- Immunohistochemistry (Formalin/PFA-fixed paraffin-embedded sections)

Immunohistochemical staining (Formalin/PFA-fixed paraffin-embedded sections) of human breast cancer with KIF5B recombinant monoclonal antibody, clone R04-6G8 (Cat # RAB02150). High-pressure and temperature Sodium Citrate pH 6.0 was used for antigen retrieval.

- Immunofluorescence

- Immunoprecipitation

## Gene Info — KIF5B

Entrez GeneID	<a href="#">3799</a>
Protein Accession#	<a href="#">P33176</a>
Gene Name	KIF5B
Gene Alias	KINH, KNS, KNS1, UKHC
Gene Description	kinesin family member 5B

Omim ID	<a href="#">602809</a>
Gene Ontology	<a href="#">Hyperlink</a>
Other Designations	kinesin 1 (110-120kD) kinesin heavy chain

## Disease

- [Alzheimer Disease](#)
- [Genetic Predisposition to Disease](#)