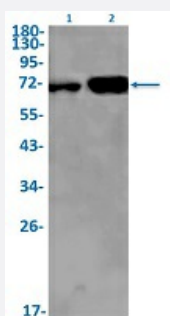


RecomAb™

LBR recombinant monoclonal antibody, clone R04-5H4

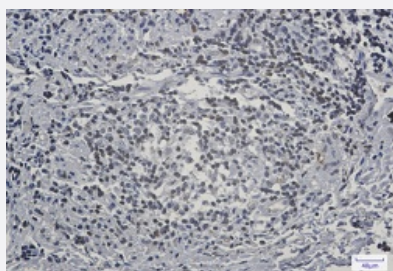
Catalog # RAB02144 Size 100 uL

Applications



Western Blot

Western Blot analysis of K562 and Lane 2: Hela lysates with LBR recombinant monoclonal antibody, clone R04-5H4 (Cat # RAB02144).



Immunohistochemistry (Formalin/PFA-fixed paraffin-embedded sections)

Immunohistochemical staining (Formalin/PFA-fixed paraffin-embedded sections) of human lung cancer with LBR recombinant monoclonal antibody, clone R04-5H4 (Cat # RAB02144). High-pressure and temperature Sodium Citrate pH 6.0 was used for antigen retrieval.

Specification

Product Description	Rabbit recombinant monoclonal antibody raised against human LBR.
Antibody Species	Rabbit
Immunogen	Original antibody is raised against a synthetic peptide corresponding to human LBR.
Theoretical MW (kDa)	Calculated MW: 71 kD
Reactivity	Human
Form	Liquid

Purification	Affinity purification
Isotype	IgG
Recommend Usage	Immunohistochemistry (1:50-1:100) Immunoprecipitation(1:20) Western Blot (1:500-1:1000) The optimal working dilution should be determined by the end user.
Storage Buffer	In 50 mM Tris-Glycine, pH 7.4 (0.15 M NaCl, 40% Glycerol, 0.01% Sodium azide and 0.05% BSA)
Storage Instruction	Store at -20 °C. Aliquot to avoid repeated freezing and thawing.
Note	This product contains sodium azide: a POISONOUS AND HAZARDOUS SUBSTANCE which should be handled by trained staff only.

Applications

- Western Blot

Western Blot analysis of K562 and Lane 2: Hela lysates with LBR recombinant monoclonal antibody, clone R04-5H4 (Cat # RAB02144).

- Immunohistochemistry (Formalin/PFA-fixed paraffin-embedded sections)

Immunohistochemical staining (Formalin/PFA-fixed paraffin-embedded sections) of human lung cancer with LBR recombinant monoclonal antibody, clone R04-5H4 (Cat # RAB02144). High-pressure and temperature Sodium Citrate pH 6.0 was used for antigen retrieval.

- Immunoprecipitation

Gene Info — LBR

Entrez GeneID	3930
Protein Accession#	Q14739
Gene Name	LBR
Gene Alias	DHCR14B, FLJ43126, LMN2R, MGC9041, PHA
Gene Description	lamin B receptor
Omim ID	169400 215140 600024
Gene Ontology	Hyperlink

Gene Summary

The protein encoded by this gene belongs to the ERG4/ERG24 family. It localized in the nuclear envelope inner membrane and anchors the lamina and the heterochromatin to the membrane. It may mediate interaction between chromatin and lamin B. Mutations of this gene has been associated with autosomal recessive HEM/Greenberg skeletal dysplasia. Alternative splicing occurs at this locus and two transcript variants encoding the same protein have been identified. [provided by RefSeq]

Other Designations

OTTHUMP00000035631|integral nuclear envelope inner membrane protein

Disease

- [Cardiovascular Diseases](#)
- [Diabetes Mellitus](#)
- [Edema](#)