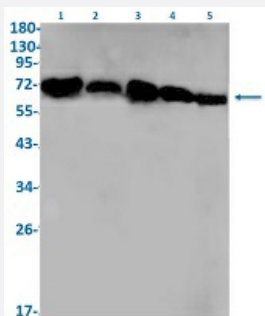


RecomAb™

# LMNB1 recombinant monoclonal antibody, clone R05-8D6

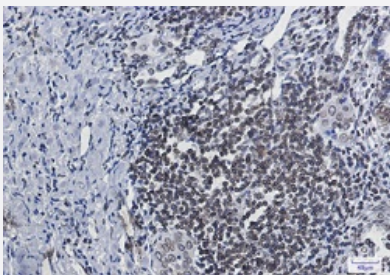
Catalog # RAB02143      Size 100 uL

## Applications



### Western Blot

Western Blot analysis of Lane 1: K562, Lane 2: rat brain, Lane 3: C6, Lane 4: 3T3 and Lane 5: HeLa lysates with LMNB1 recombinant monoclonal antibody, clone R05-8D6 (Cat # RAB02143).



### Immunohistochemistry (Formalin/PFA-fixed paraffin-embedded sections)

Immunohistochemical staining (Formalin/PFA-fixed paraffin-embedded sections) of human lung cancer with LMNB1 recombinant monoclonal antibody, clone R05-8D6 (Cat # RAB02143). High-pressure and temperature Sodium Citrate pH 6.0 was used for antigen retrieval.

## Specification

<b>Product Description</b>	Rabbit recombinant monoclonal antibody raised against human LMNB1.
<b>Antibody Species</b>	Rabbit
<b>Immunogen</b>	Original antibody is raised against a synthetic peptide corresponding to human LMNB1.
<b>Theoretical MW (kDa)</b>	Calculated MW: 66 kD
<b>Reactivity</b>	Human, Mouse, Rat
<b>Form</b>	Liquid

Purification	Affinity purification
Isotype	IgG
Recommend Usage	Immunohistochemistry (1:50-1:200) Immunoprecipitation(1:20) Western Blot (1:5000-1:10000) The optimal working dilution should be determined by the end user.
Storage Buffer	In 50 mM Tris-Glycine, pH 7.4 (0.15 M NaCl, 40% Glycerol, 0.01% Sodium azide and 0.05% BSA)
Storage Instruction	Store at -20 °C. Aliquot to avoid repeated freezing and thawing.
Note	This product contains sodium azide: a POISONOUS AND HAZARDOUS SUBSTANCE which should be handled by trained staff only.

## Applications

- Western Blot

Western Blot analysis of Lane 1: K562, Lane 2: rat brain, Lane 3: C6, Lane 4: 3T3 and Lane 5: Hela lysates with LMNB1 recombinant monoclonal antibody, clone R05-8D6 (Cat # RAB02143).

- Immunohistochemistry (Formalin/PFA-fixed paraffin-embedded sections)

Immunohistochemical staining (Formalin/PFA-fixed paraffin-embedded sections) of human lung cancer with LMNB1 recombinant monoclonal antibody, clone R05-8D6 (Cat # RAB02143). High-pressure and temperature Sodium Citrate pH 6.0 was used for antigen retrieval.

- Immunoprecipitation

## Gene Info — LMNB1

Entrez GeneID	<a href="#">4001</a>
Protein Accession#	<a href="#">P20700</a>
Gene Name	LMNB1
Gene Alias	ADLD, LMN, LMN2, LMNB, MGC111419
Gene Description	lamin B1
Omim ID	<a href="#">150340</a> <a href="#">169500</a>
Gene Ontology	<a href="#">Hyperlink</a>

**Gene Summary**

The nuclear lamina consists of a two-dimensional matrix of proteins located next to the inner nuclear membrane. The lamin family of proteins make up the matrix and are highly conserved in evolution. During mitosis, the lamina matrix is reversibly disassembled as the lamin proteins are phosphorylated. Lamin proteins are thought to be involved in nuclear stability, chromatin structure and gene expression. Vertebrate lamins consist of two types, A and B. This gene encodes one of the two B type proteins, B1. [provided by RefSeq]

**Other Designations**

-

**Disease**

- [Cardiovascular Diseases](#)
- [Diabetes Mellitus](#)
- [Edema](#)
- [Multiple Sclerosis](#)