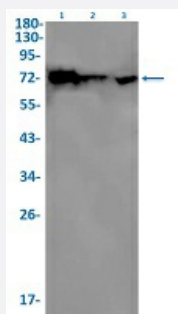


RecomAb™

LMNB2 recombinant monoclonal antibody, clone R02-2J2

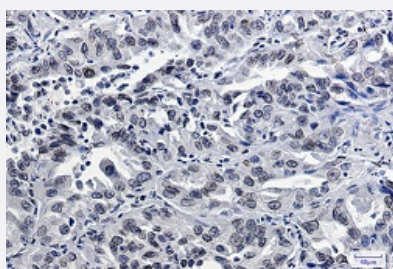
Catalog # RAB02141 Size 100 uL

Applications



Western Blot

Western Blot analysis of Lane 1: C6, Lane 2: 3T3 and Lane 3: HeLa lysates with LMNB2 recombinant monoclonal antibody, clone R02-2J2 (Cat # RAB02141).



Immunohistochemistry (Formalin/PFA-fixed paraffin-embedded sections)

Immunohistochemical staining (Formalin/PFA-fixed paraffin-embedded sections) of human lung cancer with LMNB2 recombinant monoclonal antibody, clone R02-2J2 (Cat # RAB02141). High-pressure and temperature Sodium Citrate pH 6.0 was used for antigen retrieval.

Specification

Product Description	Rabbit recombinant monoclonal antibody raised against human LMNB2.
Antibody Species	Rabbit
Immunogen	Original antibody is raised against a synthetic peptide corresponding to human LMNB2.
Theoretical MW (kDa)	Calculated MW: 70 kD
Reactivity	Human, Mouse, Rat
Form	Liquid

Purification	Affinity purification
Isotype	IgG
Recommend Usage	Immunofluorescence(1:50-1:200) Immunohistochemistry (1:50-1:100) Immunoprecipitation(1:20) Western Blot (1:500-1:1000) The optimal working dilution should be determined by the end user.
Storage Buffer	In 50 mM Tris-Glycine, pH 7.4 (0.15 M NaCl, 40% Glycerol, 0.01% Sodium azide and 0.05% BSA)
Storage Instruction	Store at -20 °C. Aliquot to avoid repeated freezing and thawing.
Note	This product contains sodium azide: a POISONOUS AND HAZARDOUS SUBSTANCE which should be handled by trained staff only.

Applications

- Western Blot

Western Blot analysis of Lane 1: C6, Lane 2: 3T3 and Lane 3: Hela lysates with LMNB2 recombinant monoclonal antibody, clone R02-2J2 (Cat # RAB02141).

- Immunohistochemistry (Formalin/PFA-fixed paraffin-embedded sections)

Immunohistochemical staining (Formalin/PFA-fixed paraffin-embedded sections) of human lung cancer with LMNB2 recombinant monoclonal antibody, clone R02-2J2 (Cat # RAB02141). High-pressure and temperature Sodium Citrate pH 6.0 was used for antigen retrieval.

- Immunofluorescence

- Immunoprecipitation

Gene Info — LMNB2

Entrez GeneID	84823
Protein Accession#	Q03252
Gene Name	LMNB2
Gene Alias	LAMB2, LMN2, MGC2721
Gene Description	lamin B2

Omim ID [150341 608709](#)

Gene Ontology [Hyperlink](#)

Gene Summary

The nuclear lamina consists of a two-dimensional matrix of proteins located next to the inner nuclear membrane. The lamin family of proteins make up the matrix and are highly conserved in evolution. During mitosis, the lamina matrix is reversibly disassembled as the lamin proteins are phosphorylated. Lamin proteins are thought to be involved in nuclear stability, chromatin structure and gene expression. Vertebrate lamins consist of two types, A and B. This gene encodes one of the two B type proteins, B2. This gene is in a head-to-tail orientation with the gene for the translocase of inner mitochondrial membrane 13 homolog gene. [provided by RefSeq]

Other Designations -

Disease

- [Cardiovascular Diseases](#)
- [Diabetes Mellitus](#)
- [Edema](#)