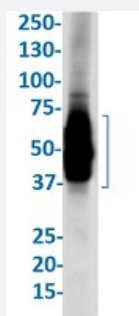


RecomAb™

Lyve1 recombinant monoclonal antibody, clone R03-3C1

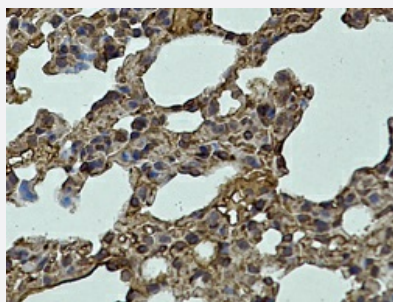
Catalog # RAB02123 Size 100 uL

Applications



Western Blot

Western Blot analysis of mouse lung lysates with Lyve1 recombinant monoclonal antibody, clone R03-3C1 (Cat # RAB02123).



Immunohistochemistry (Formalin/PFA-fixed paraffin-embedded sections)

Immunohistochemical staining (Formalin-fixed paraffin-embedded sections) of mouse lung with Lyve1 recombinant monoclonal antibody, clone R03-3C1 (Cat # RAB02123). High-pressure and temperature Sodium Citrate pH 6.0 was used for antigen retrieval.

Specification

Product Description	Rabbit recombinant monoclonal antibody raised against mouse Lyve1.
Antibody Species	Rabbit
Immunogen	Original antibody is raised against recombinant protein corresponding to mouse Lyve1.
Theoretical MW (kDa)	Calculated MW: 35 kD
Reactivity	Human, Mouse
Form	Liquid

Purification	Affinity purification
Isotype	IgG
Recommend Usage	Immunohistochemistry (1:50-1:100) Immunoprecipitation(1:20) Western Blot (1:500-1:1000) The optimal working dilution should be determined by the end user.
Storage Buffer	In 50 mM Tris-Glycine, pH 7.4 (0.15 M NaCl, 40% Glycerol, 0.01% Sodium azide and 0.05% BSA)
Storage Instruction	Store at -20 °C. Aliquot to avoid repeated freezing and thawing.
Note	This product contains sodium azide: a POISONOUS AND HAZARDOUS SUBSTANCE which should be handled by trained staff only.

Applications

- Western Blot

Western Blot analysis of mouse lung lysates with Lyve1 recombinant monoclonal antibody, clone R03-3C1 (Cat # RAB02123).

- Immunohistochemistry (Formalin/PFA-fixed paraffin-embedded sections)

Immunohistochemical staining (Formalin-fixed paraffin-embedded sections) of mouse lung with Lyve1 recombinant monoclonal antibody, clone R03-3C1 (Cat # RAB020123). High-pressure and temperature Sodium Citrate pH 6.0 was used for antigen retrieval.

- Immunoprecipitation

Gene Info — Lyve1

Entrez GeneID	114332
Protein Accession#	Q8BHC0
Gene Name	Lyve1
Gene Alias	1200012G08Rik, Crsbp-1, Lyve-1, Xlkd1
Gene Description	lymphatic vessel endothelial hyaluronan receptor 1
Gene Ontology	Hyperlink
Other Designations	cell surface retention sequence binding protein-1 extra cellular link domain-containing 1 lymphatic vessel endothelial HA receptor-1 lymphatic vessel endothelial HA receptor-1