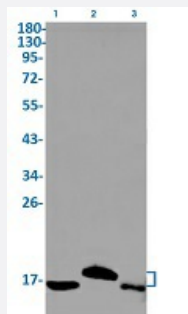


RecomAb™

MAP1LC3A recombinant monoclonal antibody, clone R07-9B1

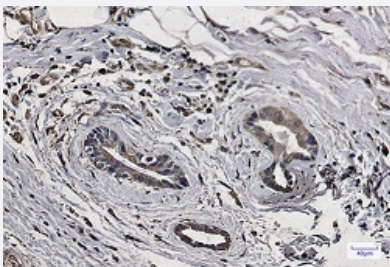
Catalog # RAB02118 Size 100 uL

Applications



Western Blot

Western Blot analysis of Lane 1: K562, Lane 2: rat brain and Lane 3: Hela lysates with MAP1LC3A recombinant monoclonal antibody, clone R07-9B1 (Cat # RAB02118).



Immunohistochemistry (Formalin/PFA-fixed paraffin-embedded sections)

Immunohistochemical staining (Formalin-fixed paraffin-embedded sections) of human breast cancer with MAP1LC3A recombinant monoclonal antibody, clone R07-9B1 (Cat # RAB020118). High-pressure and temperature Sodium Citrate pH 6.0 was used for antigen retrieval.

Specification

Product Description	Rabbit recombinant monoclonal antibody raised against human MAP1LC3A.
Antibody Species	Rabbit
Immunogen	Original antibody is raised against a synthetic peptide corresponding to human MAP1LC3A.
Theoretical MW (kDa)	Calculated MW: 14 kD
Reactivity	Human, Mouse, Rat
Form	Liquid

Purification	Affinity purification
Isotype	IgG
Recommend Usage	Immunohistochemistry (1:50-1:100) Immunoprecipitation(1:20) Western Blot (1:500-1:1000) The optimal working dilution should be determined by the end user.
Storage Buffer	In 50 mM Tris-Glycine, pH 7.4 (0.15 M NaCl, 40% Glycerol, 0.01% Sodium azide and 0.05% BSA)
Storage Instruction	Store at -20 °C. Aliquot to avoid repeated freezing and thawing.
Note	This product contains sodium azide: a POISONOUS AND HAZARDOUS SUBSTANCE which should be handled by trained staff only.

Applications

- Western Blot

Western Blot analysis of Lane 1: K562, Lane 2: rat brain and Lane 3: Hela lysates with MAP1LC3A recombinant monoclonal antibody, clone R07-9B1 (Cat # RAB02118).

- Immunohistochemistry (Formalin/PFA-fixed paraffin-embedded sections)

Immunohistochemical staining (Formalin-fixed paraffin-embedded sections) of human breast cancer with MAP1LC3A recombinant monoclonal antibody, clone R07-9B1 (Cat # RAB020118). High-pressure and temperature Sodium Citrate pH 6.0 was used for antigen retrieval.

- Immunoprecipitation

Gene Info — MAP1LC3A

Entrez GeneID	84557
Protein Accession#	Q9H492
Gene Name	MAP1LC3A
Gene Alias	LC3, LC3A, MAP1ALC3, MAP1BLC3
Gene Description	microtubule-associated protein 1 light chain 3 alpha
Omim ID	601242
Gene Ontology	Hyperlink

Gene Summary

MAP1A and MAP1B are microtubule-associated proteins which mediate the physical interactions between microtubules and components of the cytoskeleton. MAP1A and MAP1B each consist of a heavy chain subunit and multiple light chain subunits. The protein encoded by this gene is one of the light chain subunits and can associate with either MAP1A or MAP1B. Two transcript variants encoding different isoforms have been found for this gene. [provided by RefSeq]

Other Designations

MAP1 light chain 3-like protein 1|MAP1A/1B light chain 3 A|MAP1A/MAP1B LC3 A|OTTHUMP0000030696|OTTHUMP00000030697|OTTHUMP00000030698|microtubule-associated proteins 1A/1B light chain 3