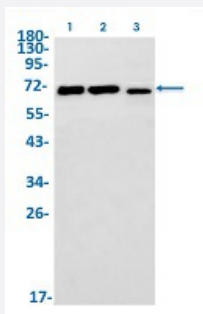


RecomAb™

# MAP3K2 recombinant monoclonal antibody, clone R06-2K7

Catalog # RAB02108      Size 100 uL

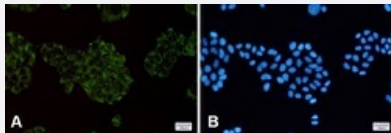
## Applications



### Western Blot

Western Blot analysis of Lane 1: K562, Lane 2: C6 and Lane 3: 3T3 lysates with MAP3K2 recombinant monoclonal antibody, clone R06-2K7 (Cat # RAB02108).

### Immunocytochemistry



Immunocytochemical staining of HeLa with MAP3K2 recombinant monoclonal antibody, clone R06-2K7 (Cat # RAB02108). (A) MAP3K2 (green) and (B) DAPI (blue).

## Specification

<b>Product Description</b>	Rabbit recombinant monoclonal antibody raised against human MAP3K2.
<b>Antibody Species</b>	Rabbit
<b>Immunogen</b>	Original antibody is raised against a synthetic peptide corresponding to human MAP3K2.
<b>Theoretical MW (kDa)</b>	Calculated MW: 70 kD
<b>Reactivity</b>	Human, Mouse, Rat
<b>Form</b>	Liquid

<b>Purification</b>	Affinity purification
<b>Isotype</b>	IgG
<b>Recommend Usage</b>	Immunocytochemistry Immunofluorescence(1:50-1:200) Immunoprecipitation(1:20) Western Blot (1:500-1:1000) The optimal working dilution should be determined by the end user.
<b>Storage Buffer</b>	In 50 mM Tris-Glycine, pH 7.4 (0.15 M NaCl, 40% Glycerol, 0.01% Sodium azide and 0.05% BSA)
<b>Storage Instruction</b>	Store at -20 °C. Aliquot to avoid repeated freezing and thawing.
<b>Note</b>	This product contains sodium azide: a POISONOUS AND HAZARDOUS SUBSTANCE which should be handled by trained staff only.

## Applications

- Western Blot

Western Blot analysis of Lane 1: K562, Lane 2: C6 and Lane 3: 3T3 lysates with MAP3K2 recombinant monoclonal antibody, clone R06-2K7 (Cat # RAB02108).

- Immunocytochemistry

Immunocytochemical staining of Hela with MAP3K2 recombinant monoclonal antibody, clone R06-2K7 (Cat # RAB02108). (A) MAP3K2 (green) and (B) DAPI (blue).

- Immunofluorescence

- Immunoprecipitation

## Gene Info — MAP3K2

<b>Entrez GeneID</b>	<a href="#">10746</a>
<b>Protein Accession#</b>	<a href="#">Q9Y2U5</a>
<b>Gene Name</b>	MAP3K2
<b>Gene Alias</b>	MEKK2, MEKK2B
<b>Gene Description</b>	mitogen-activated protein kinase kinase kinase 2

Omim ID [609487](#)

Gene Ontology [Hyperlink](#)

**Gene Summary** The protein encoded by this gene is a member of serine/threonine protein kinase family. This kinase preferentially activates other kinases involved in the MAP kinase signaling pathway. This kinase has been shown to directly phosphorylate and activate I $\kappa$ B kinases, and thus plays a role in NF- $\kappa$ B signaling pathway. This kinase has also been found to bind and activate protein kinase C-related kinase 2, which suggests its involvement in a regulated signaling process. [provided by RefSeq]

**Other Designations** MAP/ERK kinase kinase 2|MAPK/ERK kinase kinase 2|MEK kinase 2

## Pathway

- [Gap junction](#)
- [GnRH signaling pathway](#)
- [MAPK signaling pathway](#)

## Disease

- [Genetic Predisposition to Disease](#)
- [Hematologic Diseases](#)
- [Occupational Diseases](#)