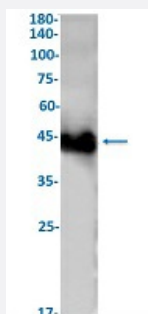


RecomAb™

ACTA1 recombinant monoclonal antibody, clone R03-5I2

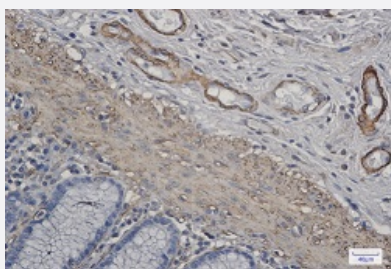
Catalog # RAB02088 Size 100 uL

Applications



Western Blot

Western Blot analysis of HeLa lysates with ACTA1 recombinant monoclonal antibody, clone R03-5I2 (Cat # RAB02088).



Immunohistochemistry (Formalin/PFA-fixed paraffin-embedded sections)

Immunohistochemical staining (Formalin-fixed paraffin-embedded sections) of human colon cancer with ACTA1 recombinant monoclonal antibody, clone R03-5I2 (Cat # RAB02088). High-pressure and temperature Sodium Citrate pH 6.0 was used for antigen retrieval.

Specification

Product Description	Rabbit recombinant monoclonal antibody raised against human ACTA1.
Antibody Species	Rabbit
Immunogen	Original antibody is raised against a synthetic peptide corresponding to human ACTA1.
Theoretical MW (kDa)	Calculated MW: 42 kD
Reactivity	Human, Rat
Form	Liquid

Purification	Affinity purification
Isotype	IgG
Recommend Usage	Immunofluorescence(1:50-1:200) Immunohistochemistry (1:50-1:100) Immunoprecipitation(1:20) Western Blot (1:500-1:1000) The optimal working dilution should be determined by the end user.
Storage Buffer	In 50 mM Tris-Glycine, pH 7.4 (0.15 M NaCl, 40% Glycerol, 0.01% Sodium azide and 0.05% BSA)
Storage Instruction	Store at -20 °C. Aliquot to avoid repeated freezing and thawing.
Note	This product contains sodium azide: a POISONOUS AND HAZARDOUS SUBSTANCE which should be handled by trained staff only.

Applications

- Western Blot

Western Blot analysis of Hela lysates with ACTA1 recombinant monoclonal antibody, clone R03-5I2 (Cat # RAB02088).

- Immunohistochemistry (Formalin/PFA-fixed paraffin-embedded sections)

Immunohistochemical staining (Formalin-fixed paraffin-embedded sections) of human colon cancer with ACTA1 recombinant monoclonal antibody, clone R03-5I2 (Cat # RAB02088). High-pressure and temperature Sodium Citrate pH 6.0 was used for antigen retrieval.

- Immunohistochemistry (Frozen sections)

- Immunofluorescence

- Immunoprecipitation

Gene Info — ACTA1

Entrez GeneID	58
Protein Accession#	P68133
Gene Name	ACTA1
Gene Alias	ACTA, ASMA, CFTD, CFTD1, CFTDM, MPFD, NEM1, NEM2, NEM3

Gene Description	actin, alpha 1, skeletal muscle
Omim ID	102610 161800 255310
Gene Ontology	Hyperlink
Gene Summary	<p>The product encoded by this gene belongs to the actin family of proteins, which are highly conserved proteins that play a role in cell motility, structure and integrity. Alpha, beta and gamma actin isoforms have been identified, with alpha actins being a major constituent of the contractile apparatus, while beta and gamma actins are involved in the regulation of cell motility. This actin is an alpha actin that is found in skeletal muscle. Mutations in this gene cause nemaline myopathy type 3, congenital myopathy with excess of thin myofilaments, congenital myopathy with cores, and congenital myopathy with fiber-type disproportion, diseases that lead to muscle fiber defects. [provided by RefSeq]</p>
Other Designations	OTTHUMP00000036123 alpha skeletal muscle actin

Disease

- [Acute Disease](#)
- [Alzheimer disease](#)
- [Atherosclerosis](#)
- [Calcinosis](#)
- [Coronary Artery Disease](#)
- [Diabetes Mellitus](#)
- [Myocardial Infarction](#)
- [Parkinson disease](#)