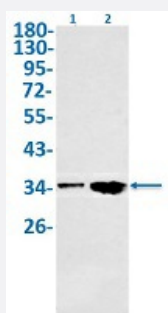


RecomAb™

NEK7 recombinant monoclonal antibody, clone R04-7A1

Catalog # RAB02071 Size 100 uL

Applications



Western Blot

Western Blot analysis of Lane 1: rat brain and Lane 2: C6 lysates with NEK7 recombinant monoclonal antibody, clone R04-7A1 (Cat # RAB02071).

Specification

Product Description	Rabbit recombinant monoclonal antibody raised against human NEK7.
Antibody Species	Rabbit
Immunogen	Original antibody is raised against a synthetic peptide corresponding to human NEK7.
Theoretical MW (kDa)	Calculated MW: 35 kD
Reactivity	Mouse, Rat
Form	Liquid
Purification	Affinity purification
Isotype	IgG
Recommend Usage	Immunoprecipitation(1:20) Western Blot (1:500-1:1000) The optimal working dilution should be determined by the end user.
Storage Buffer	In 50 mM Tris-Glycine, pH 7.4 (0.15 M NaCl, 40% Glycerol, 0.01% Sodium azide and 0.05% BSA)

Storage Instruction

Store at -20 °C.
Aliquot to avoid repeated freezing and thawing.

Note

This product contains sodium azide: a POISONOUS AND HAZARDOUS SUBSTANCE which should be handled by trained staff only.

Applications

- Western Blot

Western Blot analysis of Lane 1: rat brain and Lane 2: C6 lysates with NEK7 recombinant monoclonal antibody, clone R04-7A1 (Cat # RAB02071).

- Immunoprecipitation

Gene Info — NEK7

Entrez GeneID [140609](#)

Protein Accession# [Q8TDX7](#)

Gene Name NEK7

Gene Alias -

Gene Description NIMA (never in mitosis gene a)-related kinase 7

Omim ID [606848](#)

Gene Ontology [Hyperlink](#)

Gene Summary NIMA-related kinases share high amino acid sequence identity with the gene product of the Aspergillus nidulans 'never in mitosis A' gene, which controls initiation of mitosis.[supplied by OMIM]

Other Designations OTTHUMP00000033680

Disease

- [Adenocarcinoma](#)

- [Genetic Predisposition to Disease](#)

- [Pancreatic Neoplasms](#)