

RecomAb™

# NRF1 recombinant monoclonal antibody, clone R02-9A7

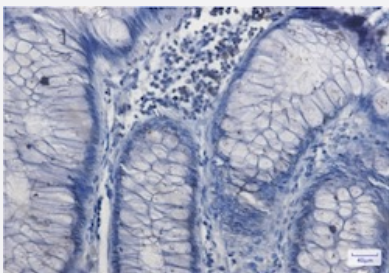
Catalog # RAB02049      Size 100 uL

## Applications



### Western Blot

Western blot analysis of Lane 1: C6, Lane 2: 3T3 and Lane 3: Hela lysates with NRF1 recombinant monoclonal antibody, clone R02-9A7 (Cat # RAB02049).



### Immunohistochemistry (Formalin/PFA-fixed paraffin-embedded sections)

Immunohistochemical staining (Formalin/PFA-fixed paraffin-embedded sections) of human colon cancer with NRF1 recombinant monoclonal antibody, clone R02-9A7 (Cat # RAB02049).

High-pressure and temperature Sodium Citrate pH 6.0 was used for antigen retrieval.

## Specification

<b>Product Description</b>	Rabbit recombinant monoclonal antibody raised against human NRF1.
<b>Antibody Species</b>	Rabbit
<b>Immunogen</b>	Original antibody is raised against a synthetic peptide corresponding to human NRF1.
<b>Theoretical MW (kDa)</b>	Calculated MW: 54 kD
<b>Reactivity</b>	Human, Mouse, Rat
<b>Form</b>	Liquid

Purification	Affinity purification
Isotype	IgG
Recommend Usage	Immunofluorescence (1:50-1:200) Immunohistochemistry (1:50-1:100) Immunoprecipitation (1:20) Western Blot (1:500-1:1000) The optimal working dilution should be determined by the end user.
Storage Buffer	In 50 mM Tris-Glycine, pH 7.4 (0.15 M NaCl, 40% Glycerol, 0.01% Sodium azide and 0.05% BSA)
Storage Instruction	Store at -20 °C. Aliquot to avoid repeated freezing and thawing.
Note	This product contains sodium azide: a POISONOUS AND HAZARDOUS SUBSTANCE which should be handled by trained staff only.

## Applications

- Western Blot

Western blot analysis of Lane 1: C6, Lane 2: 3T3 and Lane 3: Hela lysates with NRF1 recombinant monoclonal antibody, clone R02-9A7 (Cat # RAB02049).

- Immunohistochemistry (Formalin/PFA-fixed paraffin-embedded sections)

Immunohistochemical staining (Formalin/PFA-fixed paraffin-embedded sections) of human colon cancer with NRF1 recombinant monoclonal antibody, clone R02-9A7 (Cat # RAB02049).

High-pressure and temperature Sodium Citrate pH 6.0 was used for antigen retrieval.

- Immunohistochemistry (Frozen sections)

- Immunofluorescence

- Immunoprecipitation

## Gene Info — NRF1

Entrez GeneID	<a href="#">4899</a>
Protein Accession#	<a href="#">Q16656</a>
Gene Name	NRF1
Gene Alias	ALPHA-PAL

Gene Description	nuclear respiratory factor 1
Omim ID	<a href="#">600879</a>
Gene Ontology	<a href="#">Hyperlink</a>
Gene Summary	<p>This gene encodes a protein that homodimerizes and functions as a transcription factor which activates the expression of some key metabolic genes regulating cellular growth and nuclear genes required for respiration, heme biosynthesis, and mitochondrial DNA transcription and replication. The protein has also been associated with the regulation of neurite outgrowth. Alternate transcriptional splice variants, which encode the same protein, have been characterized. Additional variants encoding different protein isoforms have been described but they have not been fully characterized. Confusion has occurred in bibliographic databases due to the shared symbol of NRF1 for this gene and for "nuclear factor (erythroid-derived 2)-like 1" which has an official symbol of NFE2L1. [provided by RefSeq]</p>
Other Designations	OTTHUMP00000184912 alpha palindromic-binding protein

## Disease

- [Alzheimer disease](#)
- [Cardiovascular Diseases](#)
- [Diabetes Complications](#)
- [Diabetes Mellitus](#)
- [Edema](#)
- [Genetic Predisposition to Disease](#)
- [Metabolic Syndrome X](#)
- [Neoplasms](#)
- [Osteoporosis](#)