

RecomAb™

THOC1 recombinant monoclonal antibody, clone R05-1A8

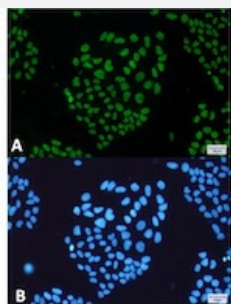
Catalog # RAB02047 Size 100 uL

Applications



Western Blot

Western blot analysis of Lane 1: Jurkat, Lane 2: HeLa and Lane 3: COS7 lysates with THOC1 recombinant monoclonal antibody, clone R05-1A8 (Cat # RAB02047).



Immunocytochemistry

Immunocytochemical staining of HeLa with THOC1 recombinant monoclonal antibody, clone R05-1A8 (Cat # RAB02047). (A) THOC1 (green) and (B) DAPI (blue).

Specification

Product Description	Rabbit recombinant monoclonal antibody raised against human THOC1.
Antibody Species	Rabbit
Immunogen	Original antibody is raised against a synthetic peptide corresponding to human THOC1.
Theoretical MW (kDa)	Calculated MW: 76 kD
Reactivity	Human
Form	Liquid

Purification	Affinity purification
Isotype	IgG
Recommend Usage	Immunocytochemistry Immunofluorescence (1:50-1:200) Western Blot (1:500-1:1000) The optimal working dilution should be determined by the end user.
Storage Buffer	In 50 mM Tris-Glycine, pH 7.4 (0.15 M NaCl, 40% Glycerol, 0.01% Sodium azide and 0.05% BSA)
Storage Instruction	Store at -20 °C. Aliquot to avoid repeated freezing and thawing.
Note	This product contains sodium azide: a POISONOUS AND HAZARDOUS SUBSTANCE which should be handled by trained staff only.

Applications

- Western Blot

Western blot analysis of Lane 1: Jurkat, Lane 2: Hela and Lane 3: COS7 lysates with THOC1 recombinant monoclonal antibody, clone R05-1A8 (Cat # RAB02047).

- Immunocytochemistry

Immunocytochemical staining of Hela with THOC1 recombinant monoclonal antibody, clone R05-1A8 (Cat # RAB02047). (A) THOC1 (green) and (B) DAPI (blue).

- Immunofluorescence

Gene Info — THOC1

Entrez GeneID	9984
Protein Accession#	Q96FV9
Gene Name	THOC1
Gene Alias	HPR1, P84, P84N5
Gene Description	THO complex 1
Omim ID	606930
Gene Ontology	Hyperlink

Gene Summary

HPR1 is part of the TREX (transcription/export) complex, which includes TEX1 (MIM 606929), THO2 (MIM 300395), ALY (MIM 604171), and UAP56 (MIM 606390).[supplied by OMIM]

Other Designations

nuclear matrix protein p84