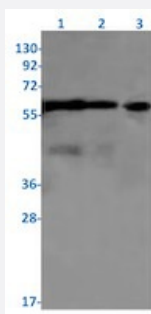


RecomAb™

RPS6KB2 recombinant monoclonal antibody, clone R04-9C1

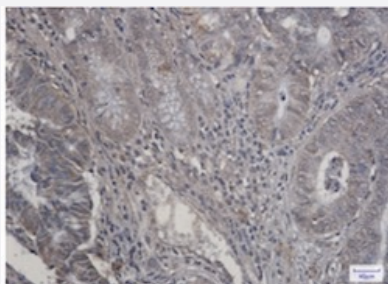
Catalog # RAB02029 Size 100 uL

Applications



Western Blot

Western blot analysis of Lane 1: rat brain, Lane 2: C6 and Lane 3: Hela lysates with RPS6KB2 recombinant monoclonal antibody, clone R04-9C1 (Cat # RAB02029).



Immunohistochemistry (Formalin/PFA-fixed paraffin-embedded sections)

Immunohistochemical staining (Formalin/PFA-fixed paraffin-embedded sections) of human colon cancer tissue with RPS6KB2 recombinant monoclonal antibody, clone R04-9C1 (Cat # RAB02029).

High-pressure and temperature Sodium Citrate pH 6.0 was used for antigen retrieval.

Specification

Product Description	Rabbit recombinant monoclonal antibody raised against human RPS6KB2.
Antibody Species	Rabbit
Immunogen	Original antibody is raised against recombinant protein corresponding to human RPS6KB2.
Theoretical MW (kDa)	Calculated MW: 53 kD
Reactivity	Human, Mouse, Rat
Form	Liquid

Purification	Affinity purification
Isotype	IgG
Recommend Usage	Immunofluorescence (1:50-1:200) Immunohistochemistry (1:50-1:100) Western Blot (1:500-1:1000) The optimal working dilution should be determined by the end user.
Storage Buffer	In 50 mM Tris-Glycine, pH 7.4 (0.15 M NaCl, 40% Glycerol, 0.01% Sodium azide and 0.05% BSA)
Storage Instruction	Store at -20 °C. Aliquot to avoid repeated freezing and thawing.
Note	This product contains sodium azide: a POISONOUS AND HAZARDOUS SUBSTANCE which should be handled by trained staff only.

Applications

- Western Blot

Western blot analysis of Lane 1: rat brain, Lane 2: C6 and Lane 3: HeLa lysates with RPS6KB2 recombinant monoclonal antibody, clone R04-9C1 (Cat # RAB02029).

- Immunohistochemistry (Formalin/PFA-fixed paraffin-embedded sections)

Immunohistochemical staining (Formalin/PFA-fixed paraffin-embedded sections) of human colon cancer tissue with RPS6KB2 recombinant monoclonal antibody, clone R04-9C1 (Cat # RAB02029).
High-pressure and temperature Sodium Citrate pH 6.0 was used for antigen retrieval.

- Immunohistochemistry (Frozen sections)

- Immunofluorescence

Gene Info — RPS6KB2

Entrez GeneID	6199
Protein Accession#	Q9UBS0
Gene Name	RPS6KB2
Gene Alias	KLS, P70-beta, P70-beta-1, P70-beta-2, S6K-beta2, S6K2, SRK, STK14B, p70(S6K)-beta, p70 S6Kb
Gene Description	ribosomal protein S6 kinase, 70kDa, polypeptide 2

Omim ID	608939
Gene Ontology	Hyperlink
Gene Summary	This gene encodes a member of the RSK (ribosomal S6 kinase) family of serine/threonine kinases. This kinase contains 2 nonidentical kinase catalytic domains and phosphorylates the S6 ribosomal protein and eucaryotic translation initiation factor 4B (eIF4B). Phosphorylation of S6 leads to an increase in protein synthesis and cell proliferation. [provided by RefSeq]
Other Designations	S6 kinase-related kinase p70 ribosomal S6 kinase beta ribosomal protein S6 kinase, 70kD, polypeptide 2 serine/threonine-protein kinase 14 beta

Pathway

- [Acute myeloid leukemia](#)
- [ErbB signaling pathway](#)
- [Fc gamma R-mediated phagocytosis](#)
- [Insulin signaling pathway](#)
- [mTOR signaling pathway](#)
- [TGF-beta signaling pathway](#)

Disease

- [Head and Neck Neoplasms](#)
- [Neoplasm Recurrence](#)
- [Neoplasms](#)