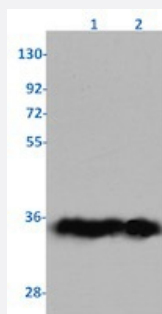


RecomAb™

EGLN3 recombinant monoclonal antibody, clone R04-3K9

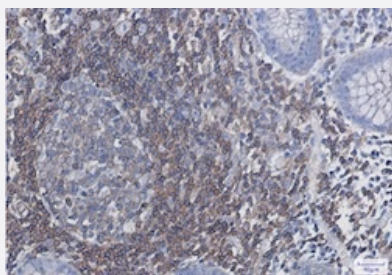
Catalog # RAB02004 Size 100 uL

Applications



Western Blot

Western blot analysis of Lane 1: rat lung and Lane 2: mouse lung lysates with EGLN3 recombinant monoclonal antibody, clone R04-3K9 (Cat # RAB02004).



Immunohistochemistry (Formalin/PFA-fixed paraffin-embedded sections)

Immunohistochemical staining (Formalin/PFA-fixed paraffin-embedded sections) of human colon cancer with EGLN3 recombinant monoclonal antibody, clone R04-3K9 (Cat # RAB02004).

High-pressure and temperature Sodium Citrate pH 6.0 was used for antigen retrieval.

Specification

Product Description	Rabbit recombinant monoclonal antibody raised against human EGLN3.
Antibody Species	Rabbit
Immunogen	Original antibody is raised against recombinant protein corresponding to human EGLN3.
Theoretical MW (kDa)	Calculated MW: 27 kD
Reactivity	Human, Mouse, Rat
Form	Liquid

Purification	Affinity purification
Isotype	IgG
Recommend Usage	Immunohistochemistry (1:50-1:100) Immunoprecipitation (1:20) Western Blot (1:500-1:1000) The optimal working dilution should be determined by the end user.
Storage Buffer	In 50 mM Tris-Glycine, pH 7.4 (0.15 M NaCl, 40% Glycerol, 0.01% Sodium azide and 0.05% BSA)
Storage Instruction	Store at -20 °C. Aliquot to avoid repeated freezing and thawing.
Note	This product contains sodium azide: a POISONOUS AND HAZARDOUS SUBSTANCE which should be handled by trained staff only.

Applications

- Western Blot

Western blot analysis of Lane 1: rat lung and Lane 2: mouse lung lysates with EGLN3 recombinant monoclonal antibody, clone R04-3K9 (Cat # RAB02004).

- Immunohistochemistry (Formalin/PFA-fixed paraffin-embedded sections)

Immunohistochemical staining (Formalin/PFA-fixed paraffin-embedded sections) of human colon cancer with EGLN3 recombinant monoclonal antibody, clone R04-3K9 (Cat # RAB02004).
High-pressure and temperature Sodium Citrate pH 6.0 was used for antigen retrieval.

- Immunoprecipitation

Gene Info — EGLN3

Entrez GeneID	112399
Protein Accession#	Q9H6Z9
Gene Name	EGLN3
Gene Alias	FLJ21620, HIFPH3, MGC125998, MGC125999, PHD3
Gene Description	egl nine homolog 3 (C. elegans)
Omim ID	606426
Gene Ontology	Hyperlink

Other Designations

HIF prolyl hydroxylase 3|egl nine homolog 3|egl nine-like protein 3 isoform

Pathway

- [Pathways in cancer](#)
- [Renal cell carcinoma](#)

Disease

- [Tobacco Use Disorder](#)