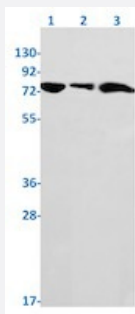


RecomAb™

Prkcd recombinant monoclonal antibody, clone R09-8H6

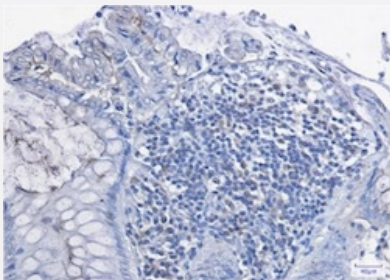
Catalog # RAB01994 Size 100 uL

Applications



Western Blot

Western blot analysis of Lane 1: K562, Lane 2: C6 and Lane 3: 3T3 lysates with Prkcd recombinant monoclonal antibody, clone R09-8H6 (Cat # RAB01994).



Immunohistochemistry (Formalin/PFA-fixed paraffin-embedded sections)

Immunohistochemical staining (Formalin/PFA-fixed paraffin-embedded sections) of human colon cancer with Prkcd recombinant monoclonal antibody, clone R09-8H6 (Cat # RAB01994).

High-pressure and temperature Sodium Citrate pH 6.0 was used for antigen retrieval.

Specification

Product Description	Rabbit recombinant monoclonal antibody raised against mouse Prkcd.
Antibody Species	Rabbit
Immunogen	Original antibody is raised against recombinant protein corresponding to mouse Prkcd.
Theoretical MW (kDa)	Calculated MW: 78 kD
Reactivity	Human, Mouse, Rat
Form	Liquid

Purification	Affinity purification
Isotype	IgG
Recommend Usage	Immunofluorescence (1:50-1:200) Immunohistochemistry (1:50-1:100) Western Blot (1:500-1:1000) The optimal working dilution should be determined by the end user.
Storage Buffer	In 50 mM Tris-Glycine, pH 7.4 (0.15 M NaCl, 40% Glycerol, 0.01% Sodium azide and 0.05% BSA)
Storage Instruction	Store at -20 °C. Aliquot to avoid repeated freezing and thawing.
Note	This product contains sodium azide: a POISONOUS AND HAZARDOUS SUBSTANCE which should be handled by trained staff only.

Applications

- Western Blot

Western blot analysis of Lane 1: K562, Lane 2: C6 and Lane 3: 3T3 lysates with Prkcd recombinant monoclonal antibody, clone R09-8H6 (Cat # RAB01994).

- Immunohistochemistry (Formalin/PFA-fixed paraffin-embedded sections)

Immunohistochemical staining (Formalin/PFA-fixed paraffin-embedded sections) of human colon cancer with Prkcd recombinant monoclonal antibody, clone R09-8H6 (Cat # RAB01994).

High-pressure and temperature Sodium Citrate pH 6.0 was used for antigen retrieval.

- Immunohistochemistry (Frozen sections)

- Immunofluorescence

Gene Info — Prkcd

Entrez GeneID	18753
Protein Accession#	P28867
Gene Name	Prkcd
Gene Alias	AI385711, D14Ert420e, PKC[d], PKCdelta, Pkcd
Gene Description	protein kinase C, delta

Gene Ontology	Hyperlink
Gene Summary	O
Other Designations	OTTMUSP00000030402 protein kinase C, delta IV protein kinase C, delta V protein kinase C[d]