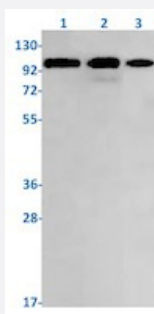


RecomAb™

PRKD1 recombinant monoclonal antibody, clone R05-4J5

Catalog # RAB01992 Size 100 uL

Applications



Western Blot

Western blot analysis of Lane 1:K562, Lane 2: C6 and Lane 3: Hela lysates with PRKD1 recombinant monoclonal antibody, clone R05-4J5 (Cat # RAB01992).

Specification

Product Description	Rabbit recombinant monoclonal antibody raised against human PRKD1.
Antibody Species	Rabbit
Immunogen	Original antibody is raised against a synthetic peptide corresponding to human PRKD1.
Theoretical MW (kDa)	Calculated MW: 102 k
Reactivity	Human, Rat
Form	Liquid
Purification	Affinity purification
Isotype	IgG
Recommend Usage	Western Blot (1:500-1:1000) The optimal working dilution should be determined by the end user.
Storage Buffer	In 50 mM Tris-Glycine, pH 7.4 (0.15 M NaCl, 40% Glycerol, 0.01% Sodium azide and 0.05% BSA)

Storage Instruction

Store at -20 °C.
Aliquot to avoid repeated freezing and thawing.

Note

This product contains sodium azide: a POISONOUS AND HAZARDOUS SUBSTANCE which should be handled by trained staff only.

Applications

- Western Blot

Western blot analysis of Lane 1:K562, Lane 2: C6 and Lane 3: Hela lysates with PRKD1 recombinant monoclonal antibody, clone R05-4J5 (Cat # RAB01992).

Gene Info — PRKD1

Entrez GeneID[5587](#)**Protein Accession#**[Q15139](#)**Gene Name**

PRKD1

Gene Alias

PKC-MU, PKCM, PKD, PRKCM

Gene Description

protein kinase D1

Omim ID[605435](#)**Gene Ontology**[Hyperlink](#)**Gene Summary**

Members of the protein kinase C (PKC) family function in many extracellular receptor-mediated signal transduction pathways. See PRKCA (MIM 176960) for further background information. The PRKCM gene encodes a cytosolic serine-threonine kinase that binds to the trans-Golgi network and regulates the fission of transport carriers specifically destined to the cell surface.[supplied by OMIM]

Other Designations

protein kinase C, mu

Disease

- [Genetic Predisposition to Disease](#)
- [Narcolepsy](#)