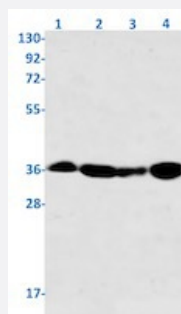


RecomAb™

PPP2CA recombinant monoclonal antibody, clone R04-4G4

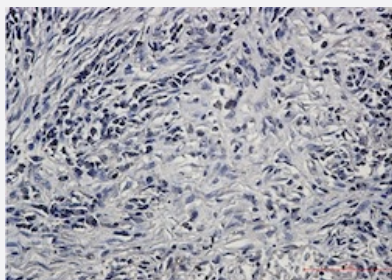
Catalog # RAB01987 Size 100 uL

Applications



Western Blot

Western blot analysis of Lane 1: rat brain, Lane 2: C6, Lane 3: CHO-K1 and Lane 4: Hela lysates with PPP2CA recombinant monoclonal antibody, clone R04-4G4 (Cat # RAB01987).



Immunohistochemistry (Formalin/PFA-fixed paraffin-embedded sections)

Immunohistochemical staining (Formalin/PFA-fixed paraffin-embedded sections) of human lung cancer with PPP2CA recombinant monoclonal antibody, clone R04-4G4 (Cat # RAB01987).

High-pressure and temperature Sodium Citrate pH 6.0 was used for antigen retrieval.

Specification

Product Description	Rabbit recombinant monoclonal antibody raised against human PPP2CA.
Antibody Species	Rabbit
Immunogen	Original antibody is raised against a synthetic peptide corresponding to human PPP2CA.
Theoretical MW (kDa)	Calculated MW: 36 kD
Reactivity	Hamster, Human, Mouse, Rat
Form	Liquid

Purification	Affinity purification
Isotype	IgG
Recommend Usage	Immunofluorescence (1:50-1:200) Immunohistochemistry (1:50-1:100) Immunoprecipitation (1:20) Western Blot (1:500-1:1000) The optimal working dilution should be determined by the end user.
Storage Buffer	In 50 mM Tris-Glycine, pH 7.4 (0.15 M NaCl, 40% Glycerol, 0.01% Sodium azide and 0.05% BSA)
Storage Instruction	Store at -20 °C. Aliquot to avoid repeated freezing and thawing.
Note	This product contains sodium azide: a POISONOUS AND HAZARDOUS SUBSTANCE which should be handled by trained staff only.

Applications

- Western Blot

Western blot analysis of Lane 1: rat brain, Lane 2: C6, Lane 3: CHO-K1 and Lane 4: Hela lysates with PPP2CA recombinant monoclonal antibody, clone R04-4G4 (Cat # RAB01987).

- Immunohistochemistry (Formalin/PFA-fixed paraffin-embedded sections)

Immunohistochemical staining (Formalin/PFA-fixed paraffin-embedded sections) of human lung cancer with PPP2CA recombinant monoclonal antibody, clone R04-4G4 (Cat # RAB01987).

High-pressure and temperature Sodium Citrate pH 6.0 was used for antigen retrieval.

- Immunohistochemistry (Frozen sections)

- Immunofluorescence

- Immunoprecipitation

Gene Info — PPP2CA

Entrez GeneID	5515
Protein Accession#	P67775
Gene Name	PPP2CA
Gene Alias	PP2Ac, PP2CA, RP-C

Gene Description	protein phosphatase 2 (formerly 2A), catalytic subunit, alpha isoform
Omim ID	176915
Gene Ontology	Hyperlink
Gene Summary	This gene encodes the phosphatase 2A catalytic subunit. Protein phosphatase 2A is one of the four major Ser/Thr phosphatases, and it is implicated in the negative control of cell growth and division. It consists of a common heteromeric core enzyme, which is composed of a catalytic subunit and a constant regulatory subunit, that associates with a variety of regulatory subunits. This gene encodes an alpha isoform of the catalytic subunit. [provided by RefSeq]
Other Designations	PP2A-alpha protein phosphatase 2, catalytic subunit, alpha isoform replication protein C serine/threonine protein phosphatase 2A, catalytic subunit, alpha isoform serine/threonine-protein phosphatase 2A catalytic subunit alpha isoform

Pathway

- [Long-term depression](#)
- [TGF-beta signaling pathway](#)
- [Tight junction](#)
- [Wnt signaling pathway](#)

Disease

- [Genetic Predisposition to Disease](#)
- [Narcolepsy](#)