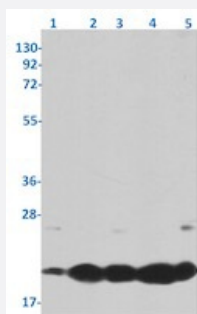


RecomAb™

BBC3 recombinant monoclonal antibody, clone R05-9C7

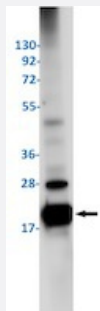
Catalog # RAB01972 Size 100 uL

Applications



Western Blot

Western blot analysis of Lane 1: Jurkat, Lane 2: THP-1, Lane 3: C6, Lane 4: 3T3 and Lane 5: HeLa lysates with BBC3 recombinant monoclonal antibody, clone R05-9C7 (Cat # RAB01972).



Western Blot

Western blot analysis of K562 lysates with BBC3 recombinant monoclonal antibody, clone R05-9C7 (Cat # RAB01972).

Specification

Product Description	Rabbit recombinant monoclonal antibody raised against human BBC3.
Antibody Species	Rabbit
Immunogen	Original antibody is raised against a synthetic peptide corresponding to human BBC3.
Theoretical MW (kDa)	Calculated MW: 21 kD
Reactivity	Human, Mouse, Rat
Form	Liquid

Purification	Affinity purification
Isotype	IgG
Recommend Usage	Immunofluorescence (1:50-1:200) Immunohistochemistry (1:50-1:100) Western Blot (1:500-1:1000) The optimal working dilution should be determined by the end user.
Storage Buffer	In 50 mM Tris-Glycine, pH 7.4 (0.15 M NaCl, 40% Glycerol, 0.01% Sodium azide and 0.05% BSA)
Storage Instruction	Store at -20 °C. Aliquot to avoid repeated freezing and thawing.
Note	This product contains sodium azide: a POISONOUS AND HAZARDOUS SUBSTANCE which should be handled by trained staff only.

Applications

- Western Blot

Western blot analysis of Lane 1: Jurkat, Lane 2: THP-1, Lane 3: C6, Lane 4: 3T3 and Lane 5: Hela lysates with BBC3 recombinant monoclonal antibody, clone R05-9C7 (Cat # RAB01972).

- Western Blot

Western blot analysis of K562 lysates with BBC3 recombinant monoclonal antibody, clone R05-9C7 (Cat # RAB01972).

- Immunohistochemistry

- Immunofluorescence

Gene Info — BBC3

Entrez GeneID	27113
Protein Accession#	Q9BXH1
Gene Name	BBC3
Gene Alias	JFY1, PUMA
Gene Description	BCL2 binding component 3
Omim ID	605854

Gene Ontology

[Hyperlink](#)

Other Designations

Bcl-2 binding component 3

Pathway

- [p53 signaling pathway](#)