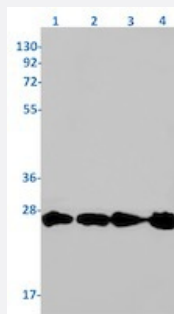


RecomAb™

# RAB5A recombinant monoclonal antibody, clone R01-6G5

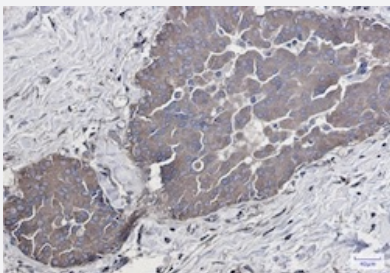
Catalog # RAB01968      Size 100 uL

## Applications



### Western Blot

Western blot analysis of Lane 1: K562, Lane 2: C6, Lane 3: 3T3 and Lane 4 : HeLa lysates with RAB5A recombinant monoclonal antibody, clone R01-6G5 (Cat # RAB01968).



### Immunohistochemistry (Formalin/PFA-fixed paraffin-embedded sections)

Immunohistochemical staining (Formalin/PFA-fixed paraffin-embedded sections) of human breast cancer with RAB5A recombinant monoclonal antibody, clone R01-6G5 (Cat # RAB01968).

High-pressure and temperature Sodium Citrate pH 6.0 was used for antigen retrieval.

## Specification

Product Description	Rabbit recombinant monoclonal antibody raised against human RAB5A.
Antibody Species	Rabbit
Immunogen	Original antibody is raised against a synthetic peptide corresponding to human RAB5A.
Theoretical MW (kDa)	Calculated MW: 24 kD
Reactivity	Human, Mouse, Rat
Form	Liquid

Purification	Affinity purification
Isotype	IgG
Recommend Usage	Immunofluorescence (1:50-1:200) Immunohistochemistry (1:50-1:100) Immunoprecipitation (1:20) Western Blot (1:500-1:1000) The optimal working dilution should be determined by the end user.
Storage Buffer	In 50 mM Tris-Glycine, pH 7.4 (0.15 M NaCl, 40% Glycerol, 0.01% Sodium azide and 0.05% BSA)
Storage Instruction	Store at -20 °C. Aliquot to avoid repeated freezing and thawing.
Note	This product contains sodium azide: a POISONOUS AND HAZARDOUS SUBSTANCE which should be handled by trained staff only.

## Applications

- Western Blot

Western blot analysis of Lane 1: K562, Lane 2: C6, Lane 3: 3T3 and Lane 4 : Hela lysates with RAB5A recombinant monoclonal antibody, clone R01-6G5 (Cat # RAB01968).

- Immunohistochemistry (Formalin/PFA-fixed paraffin-embedded sections)

Immunohistochemical staining (Formalin/PFA-fixed paraffin-embedded sections) of human breast cancer with RAB5A recombinant monoclonal antibody, clone R01-6G5 (Cat # RAB01968).

High-pressure and temperature Sodium Citrate pH 6.0 was used for antigen retrieval.

- Immunohistochemistry (Frozen sections)

- Immunofluorescence

- Immunoprecipitation

## Gene Info — RAB5A

Entrez GeneID	<a href="#">5868</a>
Protein Accession#	<a href="#">P20339</a>
Gene Name	RAB5A
Gene Alias	RAB5

Gene Description	RAB5A, member RAS oncogene family
Omim ID	<a href="#">179512</a>
Gene Ontology	<a href="#">Hyperlink</a>
Gene Summary	O
Other Designations	RAS-associated protein RAB5A

## Pathway

- [Amyotrophic lateral sclerosis \(ALS\)](#)
- [Endocytosis](#)

## Disease

- [Cardiovascular Diseases](#)
- [Diabetes Mellitus](#)
- [Edema](#)