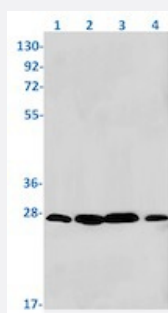


RecomAb™

RAB5A recombinant monoclonal antibody, clone R06-4J3

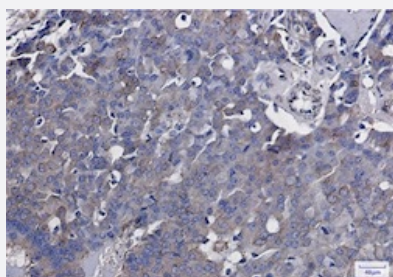
Catalog # RAB01967 Size 100 uL

Applications



Western Blot

Western blot analysis of Lane 1: K562, Lane 2: C6, Lane 3: 3T3 and Lane 4 : HeLa lysates with RAB5A recombinant monoclonal antibody, clone R06-4J3 (Cat # RAB01967).



Immunohistochemistry (Formalin/PFA-fixed paraffin-embedded sections)

Immunohistochemical staining (Formalin/PFA-fixed Formalin/PFA-fixed paraffin-embedded sections) of human breast cancer with RAB5A recombinant monoclonal antibody, clone R06-4J3 (Cat # RAB01967).

High-pressure and temperature Sodium Citrate pH 6.0 was used for antigen retrieval.

Specification

Product Description	Rabbit recombinant monoclonal antibody raised against human RAB5A.
Antibody Species	Rabbit
Immunogen	Original antibody is raised against a synthetic peptide corresponding to human RAB5A.
Theoretical MW (kDa)	Calculated MW: 24 kD
Reactivity	Human, Mouse, Rat
Form	Liquid

Purification	Affinity purification
Isotype	IgG
Recommend Usage	Immunohistochemistry (1:50-1:100) Western Blot (1:500-1:1000) The optimal working dilution should be determined by the end user.
Storage Buffer	In 50 mM Tris-Glycine, pH 7.4 (0.15 M NaCl, 40% Glycerol, 0.01% Sodium azide and 0.05% BSA)
Storage Instruction	Store at -20 °C. Aliquot to avoid repeated freezing and thawing.
Note	This product contains sodium azide: a POISONOUS AND HAZARDOUS SUBSTANCE which should be handled by trained staff only.

Applications

- Western Blot

Western blot analysis of Lane 1: K562, Lane 2: C6, Lane 3: 3T3 and Lane 4 : Hela lysates with RAB5A recombinant monoclonal antibody, clone R06-4J3 (Cat # RAB01967).

- Immunohistochemistry (Formalin/PFA-fixed paraffin-embedded sections)

Immunohistochemical staining (Formalin/PFA-fixed Formalin/PFA-fixed paraffin-embedded sections) of human breast cancer with RAB5A recombinant monoclonal antibody, clone R06-4J3 (Cat # RAB01967).

High-pressure and temperature Sodium Citrate pH 6.0 was used for antigen retrieval.

Gene Info — RAB5A

Entrez GeneID	5868
Protein Accession#	P20339
Gene Name	RAB5A
Gene Alias	RAB5
Gene Description	RAB5A, member RAS oncogene family
Omim ID	179512
Gene Ontology	Hyperlink
Gene Summary	O
Other Designations	RAS-associated protein RAB5A

Pathway

- [Amyotrophic lateral sclerosis \(ALS\)](#)
- [Endocytosis](#)

Disease

- [Cardiovascular Diseases](#)
- [Diabetes Mellitus](#)
- [Edema](#)