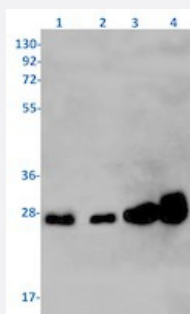


RecomAb™

RAB7A recombinant monoclonal antibody, clone R07-8G1

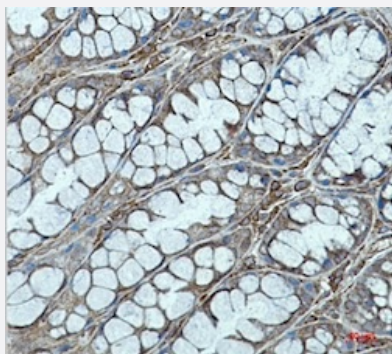
Catalog # RAB01966 Size 100 uL

Applications



Western Blot

Western blot analysis of Lane 1: K562, Lane 2: C6, Lane 3: 3T3 and Lane 4: HeLa lysates with RAB7A recombinant monoclonal antibody, clone R07-8G1 (Cat # RAB01966).



Immunohistochemistry (Formalin/PFA-fixed paraffin-embedded sections)

Immunohistochemical staining (Formalin/PFA-fixed paraffin-embedded sections) of mouse colon with RAB7A recombinant monoclonal antibody, clone R07-8G1 (Cat # RAB01966).

High-pressure and temperature Sodium Citrate pH 6.0 was used for antigen retrieval.

Specification

Product Description	Rabbit recombinant monoclonal antibody raised against human RAB7A.
Antibody Species	Rabbit
Immunogen	Original antibody is raised against a synthetic peptide corresponding to human RAB7A.
Theoretical MW (kDa)	Calculated MW: 23 kD
Reactivity	Human, Mouse, Rat
Form	Liquid

Purification	Affinity purification
Isotype	IgG
Recommend Usage	Immunofluorescence (1:50-1:200) Immunohistochemistry (1:50-1:100) Western Blot (1:500-1:1000) The optimal working dilution should be determined by the end user.
Storage Buffer	In 50 mM Tris-Glycine, pH 7.4 (0.15 M NaCl, 40% Glycerol, 0.01% Sodium azide and 0.05% BSA)
Storage Instruction	Store at -20 °C. Aliquot to avoid repeated freezing and thawing.
Note	This product contains sodium azide: a POISONOUS AND HAZARDOUS SUBSTANCE which should be handled by trained staff only.

Applications

- Western Blot

Western blot analysis of Lane 1: K562, Lane 2: C6, Lane 3: 3T3 and Lane 4: Hela lysates with RAB7A recombinant monoclonal antibody, clone R07-8G1 (Cat # RAB01966).

- Immunohistochemistry (Formalin/PFA-fixed paraffin-embedded sections)

Immunohistochemical staining (Formalin/PFA-fixed paraffin-embedded sections) of mouse colon with RAB7A recombinant monoclonal antibody, clone R07-8G1 (Cat # RAB01966).

High-pressure and temperature Sodium Citrate pH 6.0 was used for antigen retrieval.

- Immunohistochemistry (Frozen sections)

- Immunofluorescence

Gene Info — RAB7A

Entrez GeneID	7879
Protein Accession#	P51149
Gene Name	RAB7A
Gene Alias	FLJ20819, PRO2706, RAB7
Gene Description	RAB7A, member RAS oncogene family

Omim ID [600882 602298](#)

Gene Ontology [Hyperlink](#)

Gene Summary

RAB family members are small, RAS-related GTP-binding proteins that are important regulators of vesicular transport. Each RAB protein targets multiple proteins that act in exocytic / endocytic pathways. This gene encodes a RAB family member that regulates vesicle traffic in the late endosomes and also from late endosomes to lysosomes. This encoded protein is also involved in the cellular vacuolation of the VacA cytotoxin of Helicobacter pylori. Mutations at highly conserved amino acid residues in this gene have caused some forms of Charcot-Marie-Tooth (CMT) type 2 neuropathies. [provided by RefSeq]

Other Designations RAB7, member RAS oncogene family|Ras-associated protein RAB7

Disease

- [Hereditary Sensory and Autonomic Neuropathies](#)