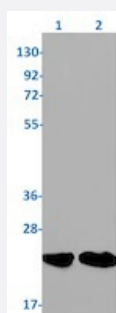


RecomAb™

# RAC3 recombinant monoclonal antibody, clone R01-6I8

Catalog # RAB01963      Size 100 uL

## Applications



### Western Blot

Western blot analysis of Lane 1: K562 and Lane 2: rat brain lysates with RAC3 recombinant monoclonal antibody, clone R01-6I8 (Cat # RAB01963).

## Specification

<b>Product Description</b>	Rabbit recombinant monoclonal antibody raised against human RAC3.
<b>Antibody Species</b>	Rabbit
<b>Immunogen</b>	Original antibody is raised against a synthetic peptide corresponding to human RAC3.
<b>Theoretical MW (kDa)</b>	Calculated MW: 21 kD
<b>Reactivity</b>	Human, Mouse, Rat
<b>Form</b>	Liquid
<b>Purification</b>	Affinity purification
<b>Isotype</b>	IgG
<b>Recommend Usage</b>	Immunohistochemistry (1:50-1:100) Western Blot (1:500-1:1000) The optimal working dilution should be determined by the end user.
<b>Storage Buffer</b>	In 50 mM Tris-Glycine, pH 7.4 (0.15 M NaCl, 40% Glycerol, 0.01% Sodium azide and 0.05% BSA)

**Storage Instruction**

Store at -20 °C.  
Aliquot to avoid repeated freezing and thawing.

**Note**

This product contains sodium azide: a POISONOUS AND HAZARDOUS SUBSTANCE which should be handled by trained staff only.

## Applications

- Western Blot

Western blot analysis of Lane 1: K562 and Lane 2: rat brain lysates with RAC3 recombinant monoclonal antibody, clone R01-618 (Cat # RAB01963).

- Immunohistochemistry (Formalin/PFA-fixed paraffin-embedded sections)

## Gene Info — RAC3

**Entrez GeneID**[5881](#)**Protein Accession#**[P60763](#)**Gene Name**

RAC3

**Gene Alias**

-

**Gene Description**

ras-related C3 botulinum toxin substrate 3 (rho family, small GTP binding protein Rac3)

**Omim ID**[602050](#)**Gene Ontology**[Hyperlink](#)**Gene Summary**

The protein encoded by this gene is a GTPase which belongs to the RAS superfamily of small GTP-binding proteins. Members of this superfamily appear to regulate a diverse array of cellular events, including the control of cell growth, cytoskeletal reorganization, and the activation of protein kinases. [provided by RefSeq]

**Other Designations**

rho family, small GTP binding protein Rac3

## Pathway

- [Adherens junction](#)
- [Axon guidance](#)

- [B cell receptor signaling pathway](#)
- [Colorectal cancer](#)
- [Fc epsilon RI signaling pathway](#)
- [Focal adhesion](#)
- [MAPK signaling pathway](#)
- [Natural killer cell mediated cytotoxicity](#)
- [Pancreatic cancer](#)
- [Pathways in cancer](#)
- [Regulation of actin cytoskeleton](#)
- [VEGF signaling pathway](#)
- [Wnt signaling pathway](#)