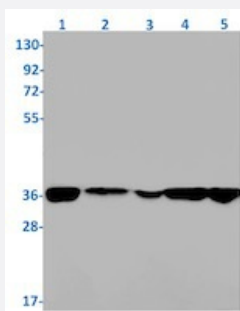


RecomAb™

PHB2 recombinant monoclonal antibody, clone R01-5J9

Catalog # RAB01949 Size 100 uL

Applications



Western Blot

Western blot analysis of Lane 1: K562, Lane 2: rat brain, Lane 3: C6, Lane 4: 3T3 and Lane 5: Hela lysates with PHB2 recombinant monoclonal antibody, clone R01-5J9 (Cat # RAB01949).

Specification

| | |
|----------------------|---|
| Product Description | Rabbit recombinant monoclonal antibody raised against human PHB2. |
| Antibody Species | Rabbit |
| Immunogen | Original antibody is raised against a synthetic peptide corresponding to human PHB2. |
| Theoretical MW (kDa) | Calculated MW: 33 kD |
| Reactivity | Human, Mouse, Rat |
| Form | Liquid |
| Purification | Affinity purification |
| Isotype | IgG |
| Recommend Usage | Immunofluorescence (1:50-1:200) Immunohistochemistry (1:50-1:100) Western Blot (1:500-1:1000) The optimal working dilution should be determined by the end user. |
| Storage Buffer | In 50 mM Tris-Glycine, pH 7.4 (0.15 M NaCl, 40% Glycerol, 0.01% Sodium azide and 0.05% BSA) |

Storage Instruction

Store at -20 °C.
Aliquot to avoid repeated freezing and thawing.

Note

This product contains sodium azide: a POISONOUS AND HAZARDOUS SUBSTANCE which should be handled by trained staff only.

Applications

- Western Blot

Western blot analysis of Lane 1: K562, Lane 2: rat brain, Lane 3: C6, Lane 4: 3T3 and Lane 5: Hela lysates with PHB2 recombinant monoclonal antibody, clone R01-5J9 (Cat # RAB01949).

- Immunohistochemistry

- Immunofluorescence

Gene Info — PHB2

Entrez GeneID [11331](#)

Protein Accession# [Q99623](#)

Gene Name PHB2

Gene Alias BAP, BCAP37, Bap37, MGC117268, PNAS-141, REA, p22

Gene Description prohibitin 2

Omim ID [610704](#)

Gene Ontology [Hyperlink](#)

Other Designations B-cell associated protein|repressor of estrogen receptor activity