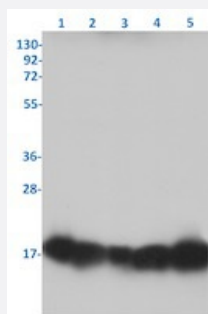


RecomAb™

RBX1 recombinant monoclonal antibody, clone R07-3F6

Catalog # RAB01942 Size 100 uL

Applications



Western Blot

Western blot analysis of Lane 1: Jurkat, Lane 2: THP-1, Lane 3: C6, Lane 4: 3T3 and Lane 5: HeLa lysates with RBX1 recombinant monoclonal antibody, clone R07-3F6 (Cat # RAB01942).

Specification

Product Description	Rabbit recombinant monoclonal antibody raised against human RBX1.
Antibody Species	Rabbit
Immunogen	Original antibody is raised against a synthetic peptide corresponding to human RBX1.
Theoretical MW (kDa)	Calculated MW: 12 kD
Reactivity	Human, Mouse, Rat
Form	Liquid
Purification	Affinity purification
Isotype	IgG
Recommend Usage	Immunofluorescence (1:50-1:200) Immunohistochemistry (1:50-1:100) Immunoprecipitation (1:20) Western Blot (1:500-1:1000) The optimal working dilution should be determined by the end user.

Storage Buffer	In 50 mM Tris-Glycine, pH 7.4 (0.15 M NaCl, 40% Glycerol, 0.01% Sodium azide and 0.05% BSA)
Storage Instruction	Store at -20 °C. Aliquot to avoid repeated freezing and thawing.
Note	This product contains sodium azide: a POISONOUS AND HAZARDOUS SUBSTANCE which should be handled by trained staff only.

Applications

- Western Blot

Western blot analysis of Lane 1: Jurkat, Lane 2: THP-1, Lane 3: C6, Lane 4: 3T3 and Lane 5: Hela lysates with RBX1 recombinant monoclonal antibody, clone R07-3F6 (Cat # RAB01942).

- Immunohistochemistry

- Immunofluorescence

- Immunoprecipitation

Gene Info — RBX1

Entrez GeneID	9978
Protein Accession#	P62877
Gene Name	RBX1
Gene Alias	BA554C12.1, MGC13357, MGC1481, RNF75, ROC1
Gene Description	ring-box 1
Omim ID	603814
Gene Ontology	Hyperlink
Gene Summary	This gene encodes an evolutionarily conserved protein that interacts with cullins. The protein plays a unique role in the ubiquitination reaction by heterodimerizing with cullin-1 to catalyze ubiquitin polymerization. It also may be involved in the regulation of protein turn-over. [provided by RefSeq]
Other Designations	OTTHUMP00000028983 RING box protein 1 RING finger protein ZYP protein regulator of cullins 1

Pathway

- [Cell cycle](#)
- [Nucleotide excision repair](#)
- [Pathways in cancer](#)
- [Renal cell carcinoma](#)
- [TGF-beta signaling pathway](#)
- [Ubiquitin mediated proteolysis](#)
- [Wnt signaling pathway](#)